



All Stainless Steel Safety Pressure Gauge

► MN-P-Sf

Service intended

It is applied to the occasions which must choose the Safety Pressure Gauge with laminated safety glass. It should be used to measure the pressure of the corrosion, non-viscosity and non-cristal gas and liquid, and could be in the strong corrosion occasion.

Dry Type

MN-P-Sf-63
MN-P-Sf-100
MN-P-Sf-160

Liquid Filled

MN-P-Sf-63-..
MN-P-Sf-100-..
MN-P-Sf-160-..



Ranges		
-1~0 Bar	0~0.6 Bar	0~25 Bar
-1~0.6 Bar	0~1 Bar	0~40 Bar
-1~1.5 Bar	0~1.6 Bar	0~60 Bar
-1~3 Bar	0~2.5 Bar	0~100 Bar
-1~5 Bar	0~4 Bar	0~160 Bar
-1~9 Bar	0~6 Bar	0~250 Bar
-1~15 Bar	0~10 Bar	0~400 Bar
-1~24 Bar	0~16 Bar	0~600 Bar
		0~1000 Bar
		0~1600 Bar



All Stainless Steel Safety Pressure Gauge

► MN-P-Sf

Specifications

- ◆ Accuracy: $\Phi 63$, 2.5%, $\pm 1.6\%$; $\Phi 100, \Phi 160$, $\pm 1.6\%, 1\%$
- ◆ Range:
 - 63 mm: 0...1 to 0...1000 bar;
 - 100 mm: 0...0.6 to 0...1000 bar;
 - 160 mm: 0...0.6 to 0...1600 bar;
- ◆ Working pressure:
 - 63 mm: Steady: $3/4 \times$ full scale value; Fluctuating: $2/3 \times$ full scale value; Short time: $1.2 \times$ full scale value
 - 100 and 160 mm: Steady: $3/4 \times$ full scale value;
 - Fluctuating: $0.9 \times$ full scale value; Short time: $1.3 \times$ full scale value
- ◆ Operating temperature:
 - Ambient: $-40 \dots +60^\circ\text{C}$;
 - Medium: $+200^\circ\text{C}$ maximum;
 - Alternating type: $+100^\circ\text{C}$ maximum
- ◆ Degree of protection: IP54 per EN 60 529 / IEC 529; Liquid filling type: Ip65
- ◆ Socket: AISI 304,
 - External thread: $\Phi 63$ G1/4", $\Phi 100$, $\Phi 160$ G1/2" (other threads are available)
- ◆ Pressure element: AISI 316L
- ◆ Liquid filling: Glycerin or dry obturation type, dry (no liquid filled)
- ◆ Internals: Stainless Steel
- ◆ Dial: White Aluminium with black marks
- ◆ Pointer: Black aluminium
- ◆ Case: Stainless Steel, Burst disk, pressure blow out back.
- ◆ Window: Laminated safety glass

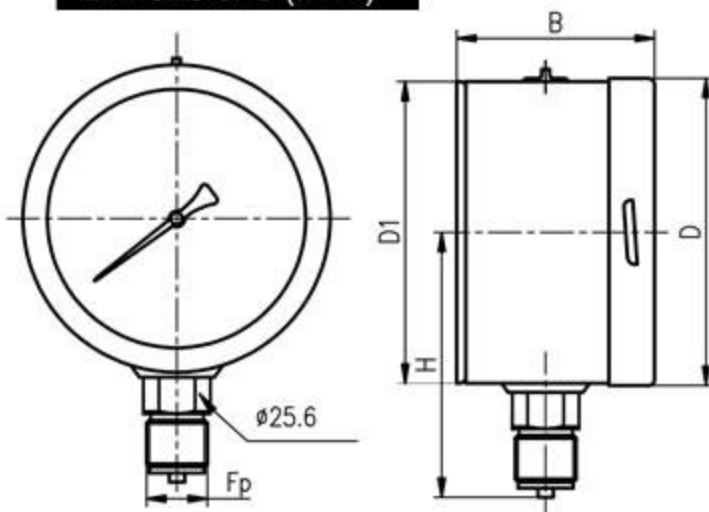
How to Order

Please specify the following properties when the manometer ordering.

- Manometer Model number,
- Dial size,
- Dry or Liquid filled (GD=Glycerin filled, SD=Silicone filled)
- Range and pressure unit
- Panel mounting; Front Flange (FF), Rear Flange (RF),
- Connection type,
- Connection thread,
- Accuracy,
- (If necessary; special scale, contact model..)

For example: **MN-P-Sf-160-(0/150 PSI)-Back-R1/2-1**

Dimensions (mm.)



Diameter	D	D1	B	H	Fp
$\Phi 63$	64	63	40	62/65	M14 x 1.5/NPT1/4
$\Phi 100$	101	100	60	87/90	M20 x 1.5/NPT1/2
$\Phi 160$	161	160	75	120/123	M20 x 1.5/NPT1/2



PP Safety Series Pressure Gauge

▶ MN-PP



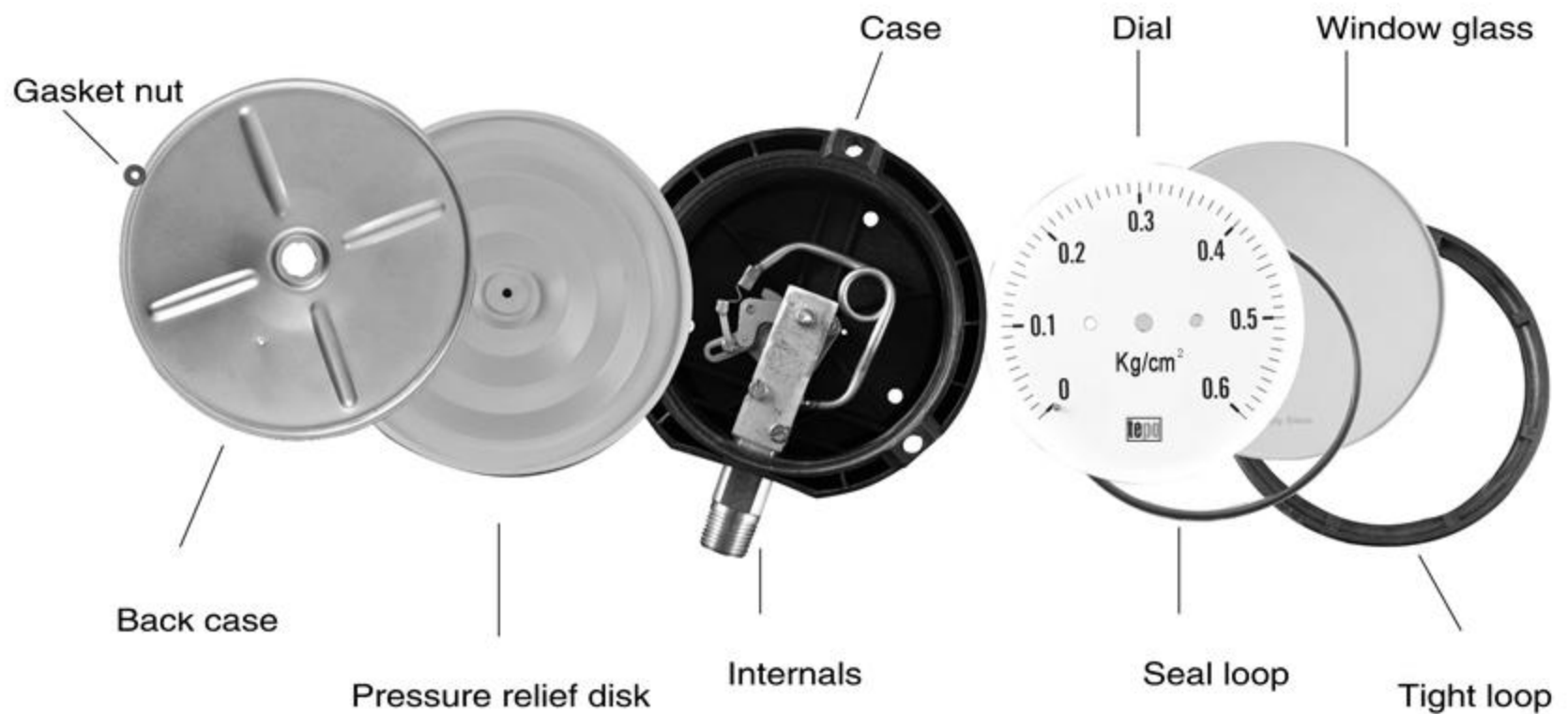
MN-PP-S Standart type

MN-PP-P Stainless steel type



Summary

The pressure gauge is applied to the food, drink, refrigeration, petrolchemical processing and so on, and the occasions where both environment and medium are strict. The case is solid with knock down back case and burst disk inside.





PP Safety Series Pressure Gauge

▶ MN-PP

Specifications

MN-PP-S

- ◆ Accuracy: $\pm 1\%$ ($\pm 0.5\%$ available)
- ◆ Range: $-1 \sim 0$ Bar, $0 \sim 1400$ Bar
- ◆ Working condition:
Ambient temperature: $-40 \sim +65^{\circ}\text{C}$;
Medium temperature: Max is 100°C
- ◆ Temperature effect: Argon-arc welding 400°C
for short time silver soldering 240°C ;
Soft soldering 65°C ;
The accuracy would change 1.5% by temperature change 40°C .
- ◆ Protection: IP65
- ◆ Socket material: cooper alloy, stainless steel
Bourdon tube: $P < 60$ Bar Copper alloy C-tube;
 $P \geq 60$ Bar stainless steel helical tube.
welding: Soft soldering, Silver soldering, Argon arc welding
- ◆ Connection: 1/2NPT, M20 \times 1.5 or others
- ◆ Case: Polypropylene, black, burst disk and knock down back case
- ◆ Diaphragm: Oil-proof rubber
- ◆ Filling plug: Oil-proof rubber
- ◆ Dial: White aluminium alloy dials with black letters.
- ◆ Pointer: Aluminium alloy, black, null setting
- ◆ Window: Glass, 3mm
- ◆ Liquid filling: Silicone, Glycerin

MN-PP-P

- ◆ Wetted part: Stainless Steel
- ◆ Internals: Stainless Steel
- ◆ C-tube tie-in welding: Argon-arc welding
- ◆ Liquid filling: Silicone
- ◆ Others is as MN-PP-S

How to Order

Please specify the following properties when the manometer ordering.

- Model number,
- Dial size,
- Dry or Liquid filled (GD=Glycerin filled, SD=Silicone filled)
- Range and pressure unit,
- Connection type,
- Connection thread,
- Accuracy,
- If necessary; special scale,...

For example: **MN-PP-P-(0/15 PSI)-Bottom-R1/2-1**





PP Safety Series Pressure Gauge

► MN-PP

Dimensions (mm.)

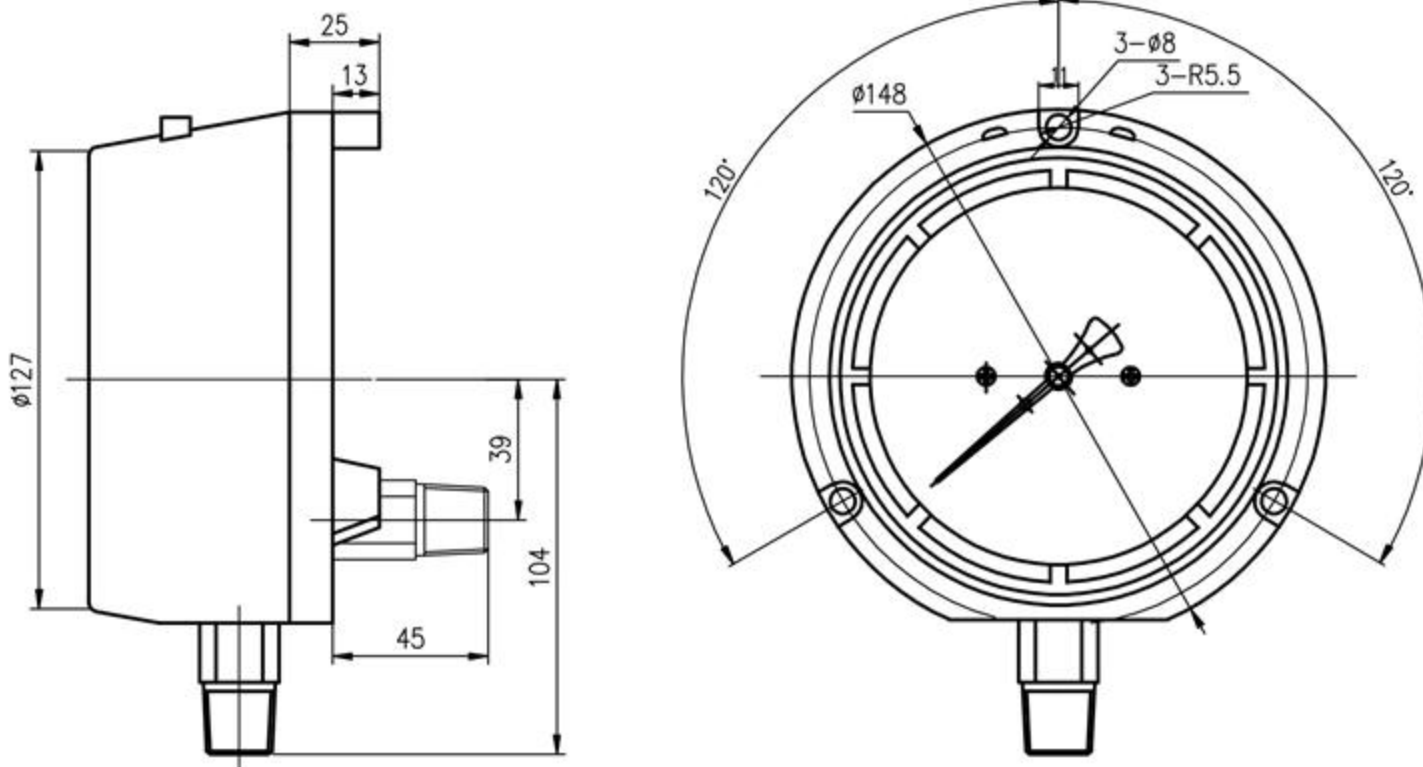


TABLE OF RANGES

-1~0 Bar	-1~15 Bar	0~6 Bar	0~25 Bar	0~160 Bar	0~1000 Bar
-1~0.6 Bar	-1~24 Bar	0~7 Bar	0~30 Bar	0~250 Bar	0~1100 Bar
-1~1.5 Bar	0~1 Bar	0~10 Bar	0~40 Bar	0~300 Bar	0~1200 Bar
-1~3 Bar	0~1.6 Bar	0~15 Bar	0~50 Bar	0~350 Bar	0~1300 Bar
-1~5 Bar	0~2.5 Bar	0~16 Bar	0~60 Bar	0~400 Bar	0~1400 Bar
-1~9 Bar	0~4 Bar	0~20 Bar	0~100 Bar	0~600 Bar	