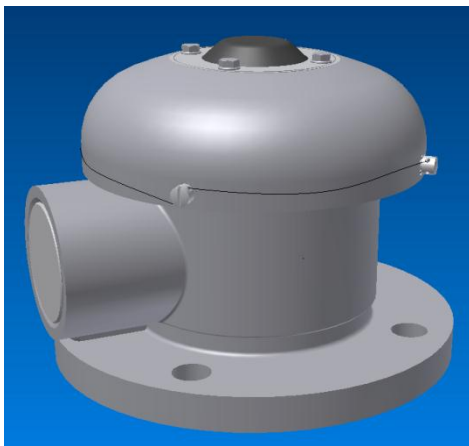
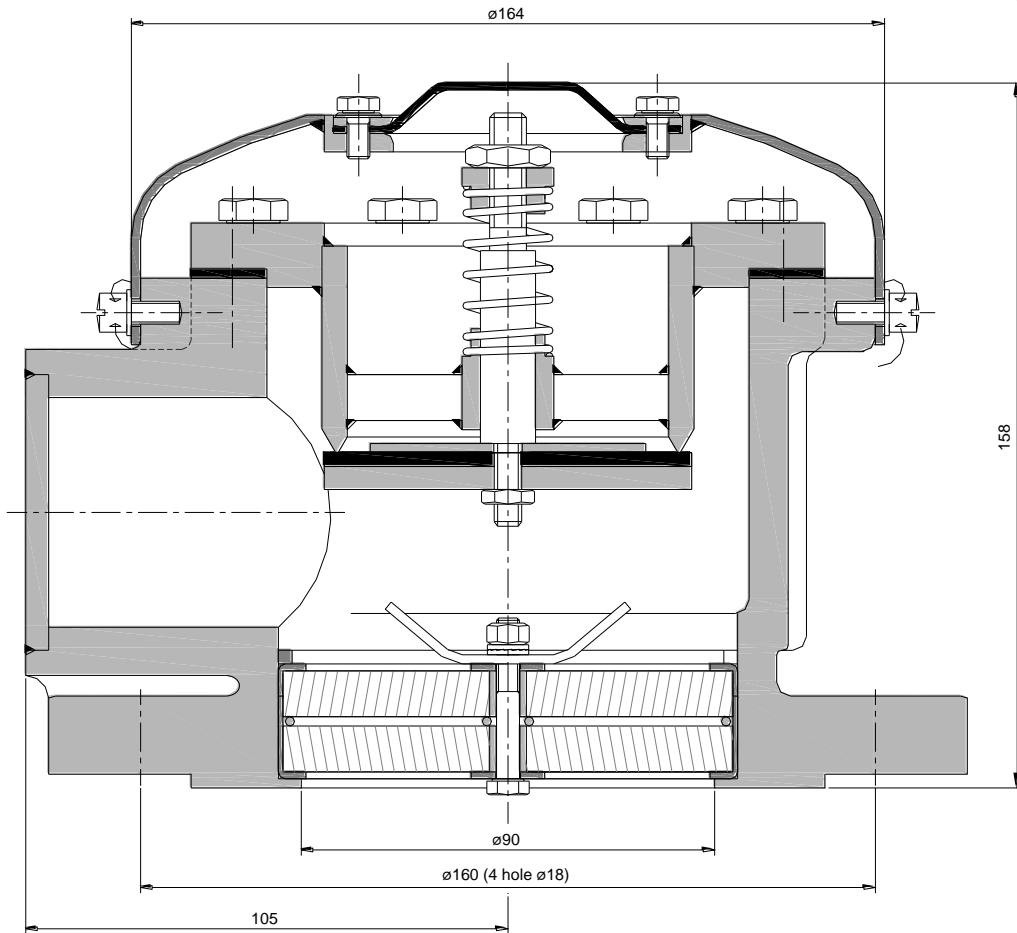
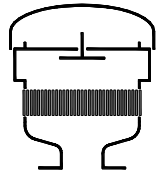


# Vacuum Valve KITO® K/VG

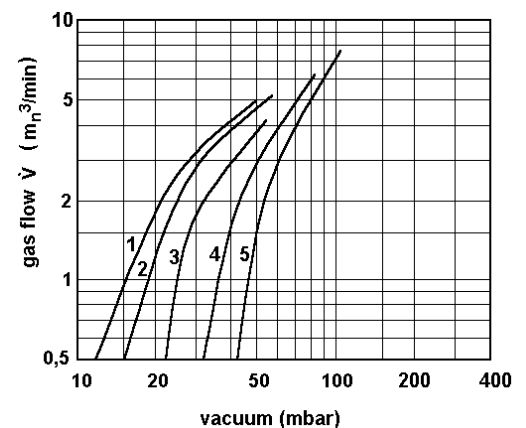


### Performance curves

- 1 =  $p_e$  10 mbar
- 2 =  $p_e$  12 mbar
- 3 =  $p_e$  20 mbar
- 4 =  $p_e$  30 mbar
- 5 =  $p_e$  40 mbar

weight 9,3 kg

Dimensions in mm



standard set pressure : vacuum -10 to -40 mbar -different settings upon request against additional price-

Design subject to change

### Standard design

housing	: cast steel mat. no.1.5638, stainless steel mat. no. 1.4408
valve seat / valve spindle	: stainless steel mat. no. 1.4571
valve pallet	: stainless steel mat. no. 1.4571
valve pallet sealing	: Viton
compression spring	: stainless steel mat. no. 1.4310
KITO® flame arrester element	: interchangeable
KITO® casing	: stainless steel mat. no. 1.4301, 1.4571
KITO® grid	: stainless steel mat. no. 1.4310, 1.4571
weather hood	: steel 1.0333, stainless steel mat. no. 1.4301
membrane	: NBR
flange connection	: Suitable for flange DN 80 to DIN EN 1092-1 PN 16 form B1

### Application

Explosion proof end-of-line vacuum relief valve to prevent inadmissible vacuum.  
Approved for flammable liquids and gases of explosion group IIA with a maximum experimental safe gap (MESG) > 0.9 mm. An operating temperature of 60°C must not be exceeded.  
Low height of construction, for portable tanks, preferably for rail tank cars and tank containers.  
Equipped with a function control equipment for the valve pallet.  
Upon request without KITO® flame arrester element available.  
Valve is sealed.