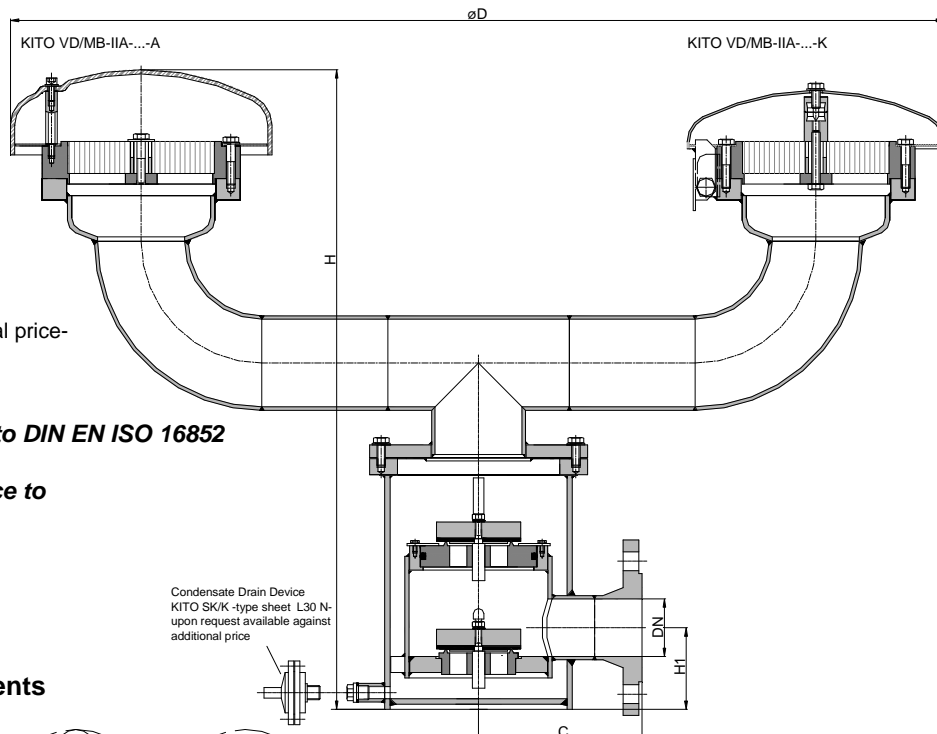
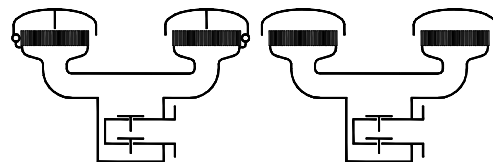


Combined Pressure / Vacuum Relief Valve

KITO® VD/MB-IIA-...-A

KITO® VD/MB-IIA-...-K



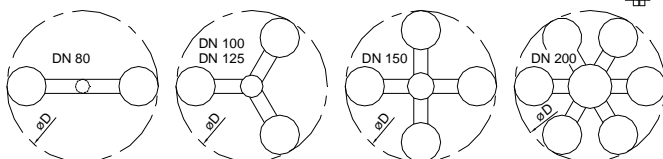
standard valve setting 7-30 mbar
-different settings against additional price-

Type examination certificate to DIN EN ISO 16852

CE -designation in accordance to

ATEX-Guideline 94/9/EC

Arrangement of the KITO® flame arrester elements



Example to order :

KITO® VD/MB-IIA-80/50-K
(design with weather hood from stainless steel
mat. no. 1.4571 and flange connection DN 80 PN 16)

| DN | ANSI | C | D | H | H1 | number of KITO® flame arrester elements | kg* | setting (mbar) | | | | |
|-----------|------|-----|------|-----|-----|---|-----|----------------|-------------|----------------|---------------|---------------|
| | | | | | | | | vacuum min. | vacuum max. | pressure sizes | pressure min. | pressure max. |
| 80 PN 16 | 3" | 180 | 940 | 655 | 105 | 2 | | 1.9 | 55 | DN 50 | 2.8 | 110 |
| | | | | | | | | | | DN 80 | 2.3 | 40 |
| 100 PN 16 | 4" | 190 | 1054 | 670 | 124 | 3 | 78 | 1.8 | 45 | DN 50 | 2.8 | 150 |
| | | | | | | | | | | DN 80 | 2.3 | 60 |
| | | | | | | | | | | DN 100 | 2.1 | 35 |
| 150 PN 16 | 6" | 245 | 1234 | 745 | 160 | 4 | | 2.4 | 60 | DN 80 | 2.4 | 170 |
| | | | | | | | | | | DN 100 | 2.2 | 100 |
| | | | | | | | | | | DN 150 | 2.8 | 35 |
| 200 PN 10 | 8" | 290 | 1634 | 835 | 215 | 6 | | 2.2 | 55 | DN 100 | 2.4 | 190 |
| | | | | | | | | | | DN 150 | 2.9 | 70 |
| | | | | | | | | | | DN 200 | 2.4 | 30 |

Dimensions in mm

* Indicated weights are understood without weight load and refer to the standard design.

Design subject to change

performance curves: E 0.16.8 N

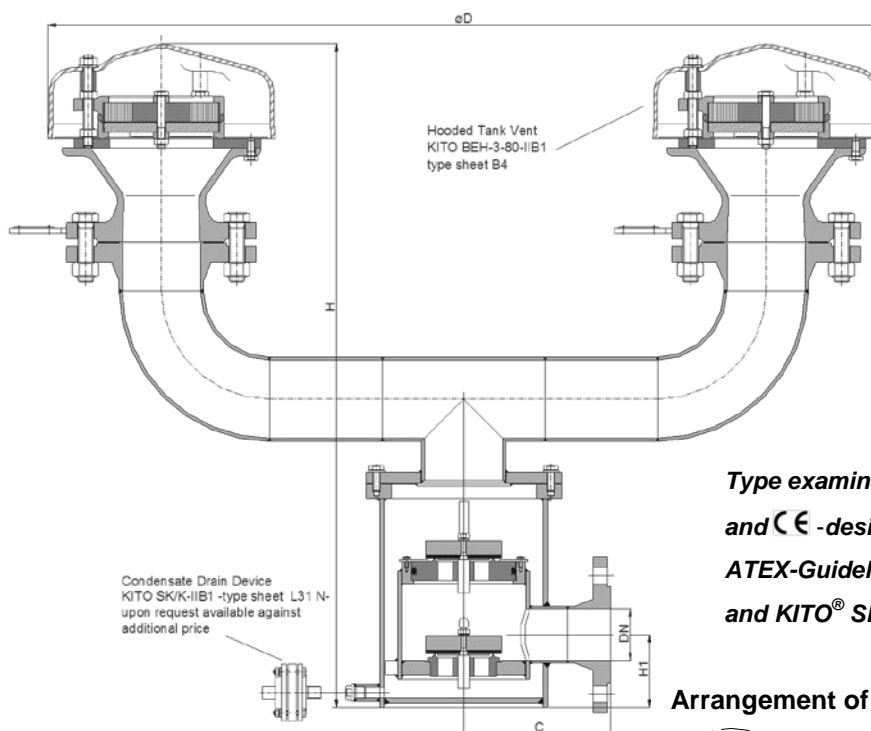
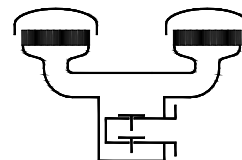
Standard design

housing : steel, stainless steel mat. no. 1.4571
 gasket : HD 3822, PTFE
 valve seats / spindles : stainless steel mat. no. 1.4571
 design valve pallet : orifice plate
 valve seals : NBR, Viton, PTFE
 KITO® flame arrester element : completely interchangeable
 KITO® casing / grid : stainless steel mat. no. 1.4308 / 1.4310, 1.4408 / 1.4571
 weather hood :
 KITO® VD/MB-IIA-...-K: stainless steel mat. no. 1.4571, hood can fold automatically as a result of folding mechanism and fusing element
 KITO® VD/MB-IIA-...-A: PMMA
 protective screen : PA6
 flange connection : DIN EN 1092-1 form B1, ANSI 150 lbs. RF

Application

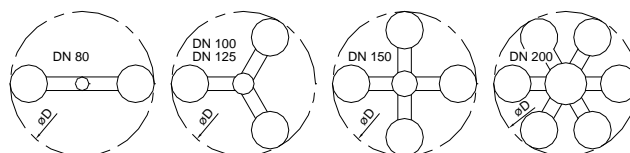
as end-of-line armature, for venting apertures on tank installations, valve is explosion-proof and endurance-burning proof for certain flammable liquids of the explosion group IIA with a maximum experimental safe gap (MESG) > 0.9. Used as venting and breather device for fixed roof tanks to prevent inadmissible pressure and vacuum and to minimize unwelcome gas losses by variable pressure setting. If desired by the customer, the valve is equipped with an explosion-proof condensate drain device.

Combined Pressure / Vacuum Relief Valve KITO® VD/MB-IIB1-...



Type examination certificate to DIN EN ISO 16852
and CE -designation in accordance to
ATEX-Guideline 94/9/EC for KITO® BEH-3-80-IIB1
and KITO® SK/K-IIB1

Arrangement of the KITO® flame arrester elements



With additional examination and approval, applicable also for alcohols (ethanol, methanol...)

| DN DIN | ANSI | C | D | H | H1 | number of BEH-3-80 | kg* | setting (mbar) | | | | |
|-----------|------|-----|------|-----|-----|-----------------------|-----|----------------|------|----------|------|------|
| | | | | | | | | vacuum | | pressure | | |
| | | | | | | | | min. | max. | sizes | min. | max. |
| 80 PN 16 | 3" | 180 | 855 | 770 | 105 | 2 | | 1.9 | 55 | DN 50 | 2.8 | 110 |
| | | | | | | | | | | DN 80 | 2.3 | 40 |
| 100 PN 16 | 4" | 190 | 950 | 785 | 124 | 3 | | 1.8 | 45 | DN 50 | 2.8 | 150 |
| | | | | | | | | | | DN 80 | 2.3 | 60 |
| | | | | | | | | | | DN 100 | 2.1 | 35 |
| 150 PN 16 | 6" | 245 | 1110 | 860 | 160 | 4 | | 2.4 | 60 | DN 80 | 2.4 | 170 |
| | | | | | | | | | | DN 100 | 2.2 | 100 |
| | | | | | | | | | | DN 150 | 2.8 | 35 |
| 200 PN 10 | 8" | 290 | 1470 | 950 | 215 | 6 | | 2.2 | 55 | DN 100 | 2.4 | 190 |
| | | | | | | | | | | DN 150 | 2.9 | 70 |
| | | | | | | | | | | DN 200 | 2.4 | 30 |

Dimensions in mm

* Indicated weights are understood without weight load and refer to the standard design.

standard valve setting 7-30 mbar -different settings against additional price-

Design subject to change

performance curves: E 0.16.8.1 N

Standard design

housing (complete) : steel, stainless steel mat. no. 1.4571
gasket : HD 3822, PTFE
valve seats / spindles : stainless steel mat. no 1.4571
design valve pallet : orifice plate
valve seals : NBR, Viton, PTFE
flange connection : DIN EN 1092-1 form B1,
ANSI 150 lbs. RF

Design KITO® BEH-3-80-IIB1

housing : 1.0619, mat. no. 1.4408
KITO® flame arrester element : completely interchangeable
KITO® casing : mat. no. 1.4408
KITO® grid : mat. no. 1.4310 / 1.4571
weather hood : PMMA
protective screen : PA6
flange connection : DIN EN 1092-1 form B1,
ANSI 150 lbs. RF

Application

End-of-line flame arrester. Explosion and endurance burning proof for all inflammable liquids and vapors of explosion group IIB1 and also for alcohols with a maximum experimental safe gap (MESG) ≥ 0.85 mm.

This device is not permitted to be installed in enclosed areas. Installation on top of storage tanks, tank access covers or breather pipes.

Used as venting and breather device for fixed roof tanks to prevent inadmissible pressure and vacuum and to minimize gas losses by variable pressure setting.

An explosion proof condensate drain is also available for this model at extra cost.