

FEATURES

- Weld-Pad connection
- Mineral insulated
- Transmitter mountable
- Exchangeable insert
- Spring loaded design

APPLICATION

- Refineries
- Oil & gas application
- Surface temperature of refractory lined vessels
- Petrochemicals Plant
- Skin Temperature of Heater Tube

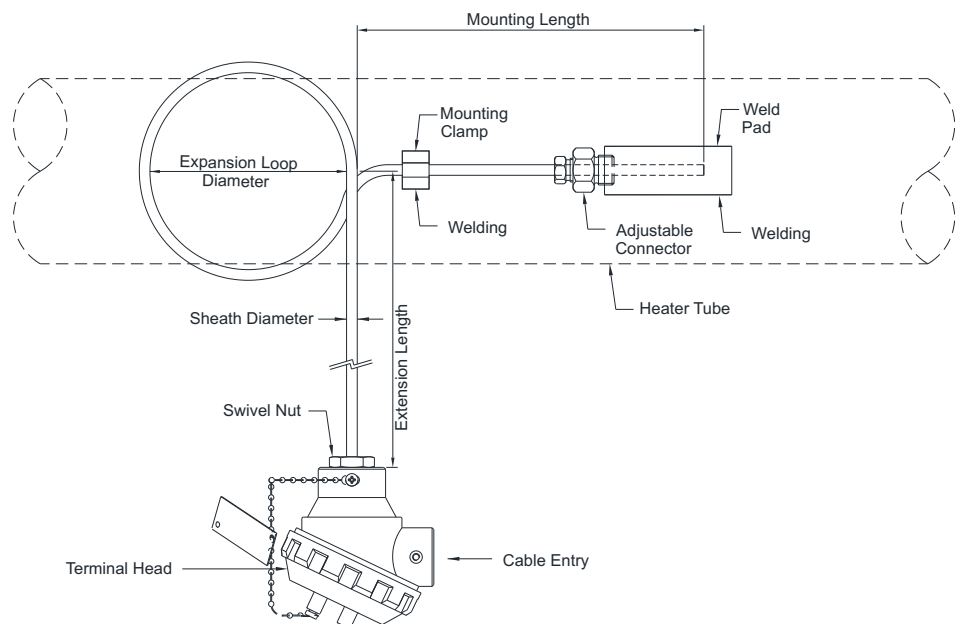
Weldpad Mounting



STANDARD SPECIFICATIONS

Element	:	Type K (NiCr-Ni)
Accuracy	:	Standard to ISA & ANSI MC96.1
No. of sensors	:	Simplex
Hot junction	:	Ungrounded
Sheath material	:	AISI 316 SS
Sheath diameter	:	6.0 mm
Terminal head type	:	Threaded, weatherproof, IP-65
Terminal head material	:	Die-cast Aluminum
Cable entry	:	3/4" ET (F), 1 No.
Mounting Type	:	Bracket Mounting for Head
Weld Pad Size	:	25 mm X 25 mm X 50 mm
Weld Pad Material	:	AISI 316 SS
Total Length	:	3000 mm

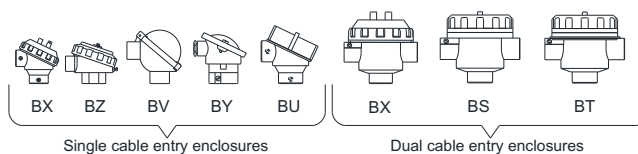
DIMENSIONAL DRAWING



NOTE :- TOTAL LENGTH = Extension Length + Perimeter of Expansion Loop + Mounting Length

REFERENCE

IEC-584.2 / ANSI MC-96.1



ORDERING CODES

1. ELEMENT

K	Type K (NiCr-Ni)
J	Type J (Fe-CuNi)
N	Type N (NiCrSi-NiSi)
E	Type E (NiCr-CuNi)
T	Type T (Cu-CuNi)
R	Type R (Pt-13%Rh/Pt)
S	Type S (Pt-10%Rh/Pt)
B	Type B (Pt/30%Rh-Pt/6%Rh)

2. ACCURACY

P	Standard	Q	Special
----------	----------	----------	---------

3. NO. OF SENSORS

V	Simplex	W	Duplex
X	Triplex		

4. HOT JUNCTION

G	Grounded	U	Ungrounded
----------	----------	----------	------------

5. SHEATH MATERIAL

MF	AISI 316 SS	MG	AISI 316L SS
ME	AISI 310 SS	MQ	Inconel 600

6. SHEATH DIAMETER

M30	3.0 mm	M50	5.0 mm
M60	6.0 mm	M80	8.0 mm

7. HEAD ENCLASURE

BZ	WP, IP 65, threaded cover
BX	WP, IP 67, threaded cover
BS	Flame proof, IP 67, Gr IIA, IIB
BT	Explosion proof, IP 67, Gr IIC
BV	WP, IP 65, Hinged type
BY	WP, IP 65, cover fitted with 2 screws
BU	Ex-Proof to CSA, FM, ATEX [EEx-d]

8. ENCLOSURE MATERIAL

ML	Die-cast aluminum		
MC	AISI 304 SS	MF	AISI 316 SS

9. CABLE ENTRY

C0	3/4" ET (F), 1 No.
C1	1/2" NPT (F), 1 No.
C2	M20 x 1.5mm (F), 1 No.
C3	3/4" NPT (F), 1 No.
C5	3/4" ET (F), 2 Nos.
C6	1/2" NPT (F), 2 Nos.
C8	M20 x 1.5mm (F), 2 Nos.
C9	3/4" NPT (F), 2 Nos.

10. MOUNTING TYPE

B0	Local mounting, no bracket
B1	Bracket mounting, for head
B2	2" Pipe mounting bracket
B3	Surface mounting, for JB

11. WELD PAD / INTEGRAL COLLAR SIZE

W0	Rectangle, 100 x 25 x 25 mm
W1	Rectangle, 100 x 50 x 50 mm
W2	Rectangle, 50 x 25 x 25 mm
W4	Integral collar, 30 x 19 x 10 mm
W5	Integral collar, 40 x 19 x 10 mm
W6	Integral collar, 50 x 19 x 10 mm

12. WELDPAD MATERIAL

MF	AISI 316 SS
ME	AISI 310 SS
M6	AISI 446 SS
MQ	Inconel 600

13. TOTAL LENGTH (TL)

XXXXX	50 mm up to 25,000 mm
--------------	-----------------------

14. OTHER OPTIONS

TB	Calibration Certificate
XF	Tag plate, AISI 304 SS
KD	SC, cable gland, Ni-brass WP
KE	DC, cable gland, Ni-brass WP
KJ	SC, cable gland, Ni-brass FP
KK	DC, cable gland, Ni-brass FP
KF	SC, cable gland, AISI 304 SS WP
KG	DC, cable gland, AISI 304 SS WP
KL	SC, cable gland, AISI 304 SS FP
KM	DC, cable gland, AISI 304 SS FP
KH	SC, cable gland, AISI 316 SS WP
KI	DC, cable gland, AISI 316 SS WP
KN	SC, cable gland, AISI 316 SS FP
KO	DC, cable gland, AISI 316 SS FP
KB	Plug fitting for CE, AISI 304 SS
KC	Plug fitting for CE, AISI 316 SS
KU	Plug fitting for CE, Aluminum
KS	SS base plate for transmitter
KT	Head mount transmitter

Ordering Example : T301-K-P-V-U-MF-M60-BZ-ML-C0-B1-W2-MF-3000

NOTES:

- Other sheath diameters, connections are available, please contact factory for details.
- WP = Weatherproof, FP = Flame proof, SC = Single Compression, DC = Double Compression, CE = Cable Entry
- Transmitter output shall be 4...20 mA as standard, any other output required, please contact factory for details.

FEATURES

- KER710 Material
- Ceramic Insulator
- Exchangeable insert
- Transmitter mountable
- Adjustable / Fixed connection
- Single / Double protecting tube

APPLICATION

- Reactors
- Glass Industries
- Oil & gas application
- Sulfur recovery plants
- Steel & Power Industries
- Furnaces, Kilns & Ovens

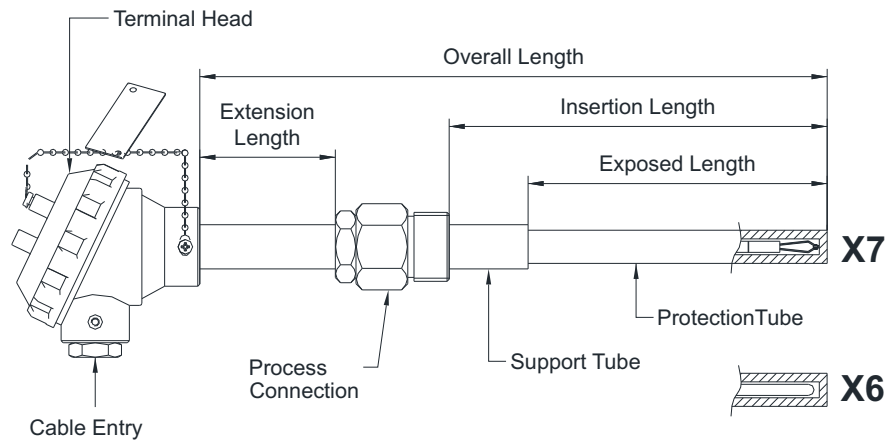
Ceramic Protection Tubes



STANDARD SPECIFICATIONS

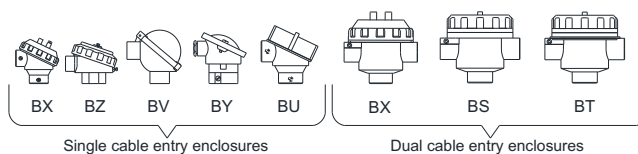
Element	:	Type R (Pt-13%Rh/Pt)
Element type	:	Element with ceramic insulators
Accuracy	:	Standard to ISA & ANSI MC96.1
No. of sensors	:	Simplex
Hot junction	:	Ungrounded
Wire diameter	:	24 AWG (0.511 mm)
Terminal head type	:	Screwed Type ,Weatherproof, IP-65
Terminal head material	:	Die-cast Aluminum
Cable entry	:	3/4" ET (F), 1 No.
Head extension type	:	Head with female threading
Support tube material	:	AISI 446 SS
Protecting tube material	:	KER - 710, Recrystallised Alumina
Protecting tube size (OD X ID)	:	15 x 10 mm
Process connection type	:	Adjustable connection
Process connection	:	3/4" NPT (M)
Process connection material	:	ASTM A 105 / Carbon Steel
Overall length / Exposed length	:	500 mm / 300 mm
Extension Length	:	100 mm

DIMENSIONAL DRAWING



REFERENCE

IEC-584.2 / ANSI MC-96.1



ORDERING CODES

1. ELEMENT

K	Type K (NiCr-Ni)
N	Type N (NiCrSi-NiSi)
R	Type R (Pt-13%Rh/Pt)
S	Type S (Pt-10%Rh/Pt)
B	Type B (Pt/30%Rh-Pt/6%Rh)

2. ELEMENT TYPE

X6	Mineral insulated
X7	Element with ceramic insulator

3. ACCURACY

P	Standard
Q	Special

4. NO. OF SENSORS

V	Simplex
W	Duplex
X	Triplex

5. HOT JUNCTION

G	Grounded
U	Ungrounded

6. SHEATH MATERIAL

MQ	Inconel 600
-----------	-------------

7. SHEATH DIAMETER (For X6)

M30	3.0 mm
M50	5.0 mm
M60	6.0 mm
M80	8.0 mm
M10	10.0 mm
M12	12.0 mm

OR

7. SHEATH DIAMETER (For X7)

W24	24 AWG (0.511 mm)
W25	25 AWG (0.455 mm)
W26	26 AWG (0.404 mm)
W27	27 AWG (0.361 mm)

8. HEAD ENCLSURE

BZ	WP, IP 65, threaded cover
BX	WP, IP 67, threaded cover
BS	Flame proof, IP 67, Gr IIA, IIB
BT	Explosion proof, IP 67, Gr IIC
BV	WP, IP 65, Hinged type
BY	WP, IP 65, cover fitted with 2 screws
BU	Ex-Proof to CSA,FM,ATEX [EEx-d]

9. ENCLOSURE MATERIAL

ML	Die-cast aluminum
MC	AISI 304 SS
MF	AISI 316 SS

10. CABLE ENTRY

C0	3/4" ET (F), 1 No.
C1	1/2" NPT (F), 1 No.
C2	M20 x 1.5mm (F), 1 No.
C3	3/4" NPT (F), 1 No.
C5	3/4" ET (F), 2 Nos.
C6	1/2" NPT (F), 2 Nos.
C8	M20 x 1.5mm (F), 2 Nos.
C9	3/4" NPT (F), 2 Nos.

11. SUPPORT TUBE MATERIAL

MF	AISI 316 SS
MG	AISI 316L SS
ME	AISI 310 SS
MQ	Inconel 600
M6	AISI 446 SS

12. INNER PROTECTION TUBE

P6	KER - 610, Pythagoras
P7	KER - 710, Recrystallised Alumina

13. INNER PROTECTION TUBE SIZE

T06	Ø6 X 1.0 mm thk
T08	Ø8 X 1.5 mm thk
T10	Ø10 X 2.0 mm thk
T12	Ø12 X 2.0 mm thk

14. OUTER PROTECTION TUBE

P6	KER - 610, Pythagoras
P7	KER - 710, Recrystallised Alumina
P3	Kanthal AF
P4	Kanthal APM
MQ	Inconel 600

15. OUTER PROTECTION TUBE SIZE

T06	Ø6 X 1.0 mm thk
T08	Ø8 X 1.5 mm thk
T10	Ø10 X 2.0 mm thk
T12	Ø12 X 2.0 mm thk
T50	Ø15 X 2.5 mm thk
T20	Ø20 X 2.5 mm thk
T24	Ø24 X 3.0 mm thk

16. PROCESS CONNECTION TYPE

KW	Adjustable connection
KX	Fixed connection

K

X7

P

V

U

MQ

M60

W24

BZ

ML

C0

M6

XX

XXX

P7

T50

KW

ORDERING CODES

17. PROCESS CONNECTION

14N	1/2" NPT (M)
14B	1/2" BSP (M)
15N	3/4" NPT (M)
15B	3/4" BSP (M)
16N	1" NPT (M)
18N	2" NPT (M)
16B	1" BSP (M)
16B	2" BSP (M)

15N

18. PROCESS CONNECTION MATERIAL

MB	ASTM A 105 / Carbon Steel
MF	AISI 316 SS

MB

19. OVERALL / EXPOSED LENGTH (OL)

XXXX/XXXX	50 mm up to 2,000 mm
OR	

500/300

19. INSERTION / EXPOSED LENGTH (IL)

XXXX/XXXX	50 mm up to 2,000 mm
------------------	----------------------

400/300

20. EXTENSION LENGTH (XL)

XXX	50 mm up to 250 mm
------------	--------------------

100

21. OTHER OPTIONS

TB	Calibration Certificate
XF	Tag plate, AISI 304 SS
KD	SC, cable gland, Ni-brass WP
KE	DC, cable gland, Ni-brass WP
KJ	SC, cable gland, Ni-brass FP
KK	DC, cable gland, Ni-brass FP
KF	SC, cable gland, AISI 304 SS WP
KG	DC, cable gland, AISI 304 SS WP
KL	SC, cable gland, AISI 304 SS FP
KM	DC, cable gland, AISI 304 SS FP
KH	SC, cable gland, AISI 316 SS WP
KI	DC, cable gland, AISI 316 SS WP
KN	SC, cable gland, AISI 316 SS FP
KO	DC, cable gland, AISI 316 SS FP
KB	Plug fitting for CE, AISI 304 SS
KC	Plug fitting for CE, AISI 316 SS
KU	Plug fitting for CE, Aluminum
KS	SS base plate for transmitter
KT	Head mount transmitter

XX

Ordering Example :

T302-K-X7-P-V-U-MQ-M60-W24-BZ-ML-C0-M6-P7-T50-KW-15N-MB-500/300 or 400/300-100

NOTES:

1. Other sheath diameters, connections are available, please contact factory for details.
2. WP = Weatherproof, FP = Flame proof, SC = Single Compression, DC = Double Compression, CE = Cable Entry
3. Transmitter output shall be 4...20 mA as standard, any other output required, please contact factory for details.

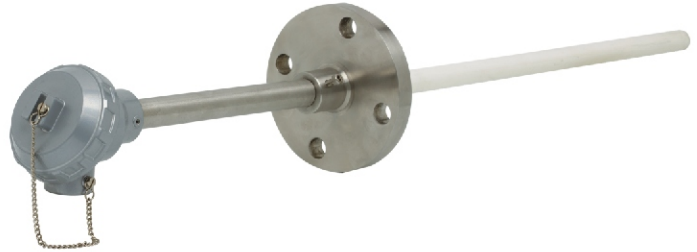
FEATURES

- KER710 Material
- Ceramic Insulator
- Exchangeable insert
- Transmitter mountable
- Adjustable / Fixed connection
- Single / Double protecting tube

APPLICATION

- Reactors
- Glass Industries
- Oil & gas application
- Sulfur recovery plants
- Steel & Power Industries
- Furnaces, Kilns & Ovens

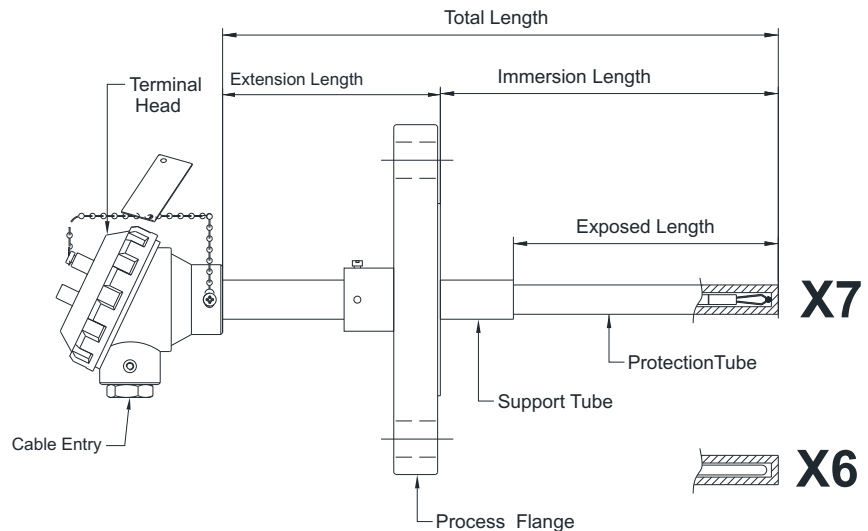
Ceramic Protection Tubes



STANDARD SPECIFICATIONS

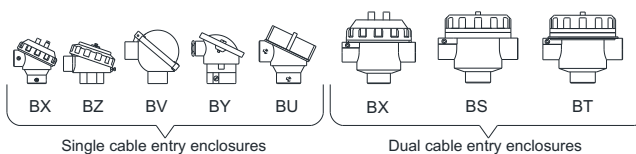
Element	:	Type R (Pt-13%Rh/Pt)
Element type	:	Element with ceramic insulators
Accuracy	:	Standard to ISA & ANSI MC96.1
No. of sensors	:	Simplex
Hot junction	:	Ungrounded
Wire diameter	:	24 AWG (0.404 mm)
Terminal head type	:	Screwed Type ,Weatherproof, IP-65
Terminal head material	:	Die-cast Aluminum
Cable entry	:	3/4" ET (F), 1 No.
Head extension type	:	Head only
Support tube material	:	AISI 446 SS
Protecting tube material	:	KER - 710, Recrystallised Alumina
Protecting tube size (OD X ID)	:	15 x 10 mm
Process connection type	:	Adjustable connection
Process connection	:	1.5" RF 150#
Process connection material	:	ASTM A 105 / Carbon Steel
Overall length / Exposed length	:	500 mm / 300 mm
Extension Length	:	100 mm

DIMENSIONAL DRAWING



REFERENCE

IEC-584.2 / ANSI MC-96.1



ORDERING CODES

1. ELEMENT

K	Type K (NiCr-Ni)
N	Type N (NiCrSi-NiSi)
R	Type R (Pt-13%Rh/Pt)
S	Type S (Pt-10%Rh/Pt)
B	Type B (Pt/30%Rh-Pt/6%Rh)

2. ELEMENT TYPE

X6	Mineral insulated
X7	Element with ceramic insulator

3. ACCURACY

P	Standard
Q	Special

4. NO. OF SENSORS

V	Simplex
W	Duplex
X	Triplex

5. HOT JUNCTION

G	Grounded
U	Ungrounded

6. SHEATH MATERIAL

MQ	Inconel 600□
XX	Not applicable

7. SHEATH DIAMETER (For X6)

M30	3.0 mm
M50	5.0 mm
M60	6.0 mm
M80	8.0 mm
M10	10.0 mm
M12	12.0 mm

OR

7. SHEATH DIAMETER (For X7)

W24	24 AWG (0.511 mm)
W25	25 AWG (0.455 mm)
W26	26 AWG (0.404 mm)
W27	27 AWG (0.361 mm)

8. HEAD ENCLSURE

BZ	WP, IP 65, threaded cover
BX	WP, IP 67, threaded cover
BS	Flame proof, IP 67, Gr IIA, IIB
BT	Explosion proof, IP 67, Gr IIC
BV	WP, IP 65, Hinged type
BY	WP, IP 65, cover fitted with 2 screws
BU	Ex-Proof to CSA,FM,ATEX [Ex-d]

9. ENCLOSURE MATERIAL

ML	Die-cast aluminum
MC	AISI 304 SS
MF	AISI 316 SS

10. CABLE ENTRY

C0	3/4" ET (F), 1 No.
C1	1/2" NPT (F), 1 No.
C2	M20 x 1.5mm (F), 1 No.
C3	3/4" NPT (F), 1 No.
C5	3/4" ET (F), 2 Nos.
C6	1/2" NPT (F), 2 Nos.
C8	M20 x 1.5mm (F), 2 Nos.
C9	3/4" NPT (F), 2 Nos.

11. SUPPORT TUBE MATERIAL

MF	AISI 316 SS
MG	AISI 316L SS
ME	AISI 310 SS
MQ	Inconel 600

12. INNER PROTECTION TUBE

P6	KER - 610, Pythagoras
P7	KER - 710, Recrystallised Alumina

13. INNER PROTECTION TUBE SIZE

T06	Ø6 X 1.0 mm thk
T08	Ø8 X 1.5 mm thk
T10	Ø10 X 2.0 mm thk
T12	Ø12 X 2.0 mm thk

14. OUTER PROTECTION TUBE

P6	KER - 610, Pythagoras
P7	KER - 710, Recrystallised Alumina
P3	Kanthal AF
P4	Kanthal APM
MQ	Inconel 600

15. INNER PROTECTION TUBE SIZE

T06	Ø6 X 1.0 mm thk
T08	Ø8 X 1.5 mm thk
T10	Ø10 X 2.0 mm thk
T12	Ø12 X 2.0 mm thk
T50	Ø15 X 2.5 mm thk
T20	Ø20 X 2.5 mm thk
T24	Ø24 X 3.0 mm thk

16. PROCESS CONNECTION TYPE

KW	Adjustable connection
KX	Fixed connection

ORDERING CODES

17. PROCESS CONNECTION

A25	1.5" RF 150# as per ANSI B 16.5
A26	1.5" RF 300# as per ANSi B 16.5
A27	1.5" RF 600# as per ANSi B 16.5
A31	2" RF 150# as per ANSI B 16.5
A32	2" RF 300# as per ANSI B 16.5
A33	2" RF 600# as per ANSI B 16.5

A25

18. PROCESS CONNECTION MATERIAL

MB	ASTM A 105 / Carbon Steel
MF	AISI 316 SS

MB

19. OVERALL / EXPOSED LENGTH (OL)

XXXX/XXXX	50 mm up to 2,000 mm
------------------	----------------------

500/300

OR

19. INSERTION / EXPOSED LENGTH (IL)

XXXX/XXXX	50 mm up to 2,000 mm
------------------	----------------------

400/300

20. EXTENSION LENGTH (EL)

XXX	50 mm up to 250 mm
------------	--------------------

100

21. OTHER OPTIONS

TB	Calibration Certificate
XF	Tag plate, AISI 304 SS
KD	SC, cable gland, Ni-brass WP
KE	DC, cable gland, Ni-brass WP
KJ	SC, cable gland, Ni-brass FP
KK	DC, cable gland, Ni-brass FP
KF	SC, cable gland, AISI 304 SS WP
KG	DC, cable gland, AISI 304 SS WP
KL	SC, cable gland, AISI 304 SS FP
KM	DC, cable gland, AISI 304 SS FP
KH	SC, cable gland, AISI 316 SS WP
KI	DC, cable gland, AISI 316 SS WP
KN	SC, cable gland, AISI 316 SS FP
KO	DC, cable gland, AISI 316 SS FP
KB	Plug fitting for CE, AISI 304 SS
KC	Plug fitting for CE, AISI 316 SS
KU	Plug fitting for CE, Aluminum
KS	SS base plate for transmitter
KT	Head mount transmitter

XX

Ordering Example :

T303-K-X7-P-V-U-MQ-M60-W24-BZ-ML-C0-MF-P7-T50-KW-A25-MB-500/300 or 400/300-100

NOTES:

1. Other sheath diameters, connections are available, please contact factory for details.
2. WP = Weatherproof, FP = Flame proof, SC = Single Compression, DC = Double Compression, CE = Cable Entry
3. Transmitter output shall be 4...20 mA as standard, any other output required, please contact factory for details.

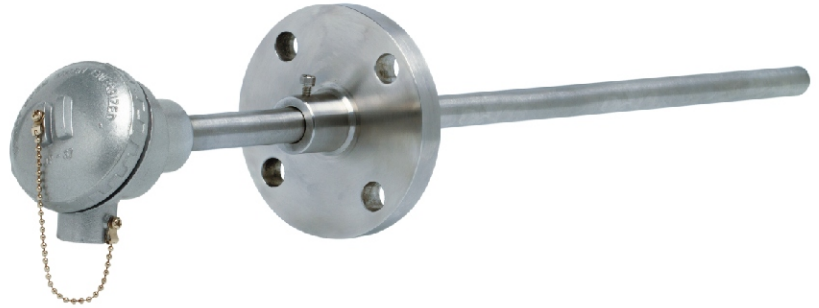
FEATURES

- Integrated Protecting Tube
- Mineral insulated
- Transmitter mountable
- Exchangeable insert
- Spring loaded design

APPLICATION

- Chemical & petrochemical
- Oil & gas application
- Water, waste-water treatment
- Power & Utilities
- Air & flue gas services
- Furnaces, Klins & Ovens

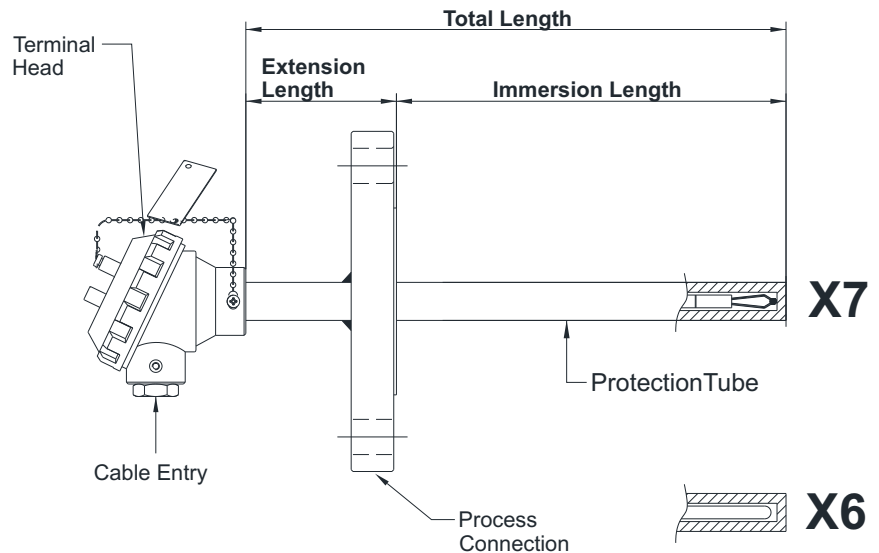
Threaded / Flanged



STANDARD SPECIFICATIONS

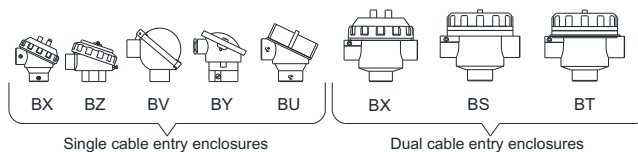
Element	:	Type K (NiCr-Ni)
Accuracy	:	Standard to ISA & ANSI MC96.1
No. of sensors	:	Simplex
Hot junction	:	Ungrounded
Sheath material	:	AISI 316 SS
Sheath diameter	:	6.0 mm
Terminal head type	:	Threaded, weatherproof, IP-65
Terminal head material	:	Die-cast Aluminum
Cable entry	:	3/4" ET (F), 1 No.
Head Extension Type	:	Head with female threading
Protecting Tube Material	:	AISI 316 SS
Protecting Tube Size	:	1/2" Sch 40
Process connection type	:	Adjustable connection
Process connection	:	3/4" NPT (M)
Process connection material:	:	ASTM A 105 (Carbon Steel)
Immersion Length	:	150 mm
Extension Length	:	100 mm

DIMENSIONAL DRAWING



REFERENCE

IEC-584.2 / ANSI MC-96.1



ORDERING CODES

1. ELEMENT		K	9. ENCLOSURE MATERIAL		ML
K	Type K (NiCr-Ni)		ML	Die-cast aluminum	
J	Type J (Fe-CuNi)		MC	AISI 304 SS	
N	Type N (NiCrSi-NiSi)		MF	AISI 316 SS	
E	Type E (NiCr-CuNi)		10. CABLE ENTRY		C0
T	Type T (Cu-CuNi)		C0	3/4" ET (F), 1 No.	
R	Type R (Pt-13%Rh/Pt)	C1	1/2" NPT (F), 1 No.		
S	Type S (Pt-10%Rh/Pt)	C2	M20 x 1.5mm (F), 1 No.		
B	Type B (Pt/30%Rh-Pt/6%Rh)	C3	3/4" NPT (F), 1 No.		
2. ELEMENT TYPE		X7	C5	3/4" ET (F), 2 Nos.	
X6	Mineral insulated		C6	1/2" NPT (F), 2 Nos.	
X7	Element with ceramic insulator	11. PROTECTION TUBE MATERIAL		MF	
3. ACCURACY		P	MF		
P	Standard		MG		AISI 316L SS
Q	Special	ME	AISI 310 SS		
4. NO. OF SENSORS		V	MQ	Inconel 600	
V	Simplex		12. PROTECTION TUBE		U5
W	Duplex		U1	Tube Ø10 x 1.5 mm THK	
X	Triplex	U2	Tube Ø12 x 1.5 mm THK		
5. HOT JUNCTION		U	U3	Pipe 3/8" Sch 40	
G	Grounded		U4	Pipe 3/8" Sch 80	
U	Ungrounded	MF	U5	Pipe 1/2" Sch 40	
6. SHEATH MATERIAL			U6	Pipe 1/2" Sch 80	
MF	AISI 316 SS		U7	Pipe 3/4" Sch 40	
MG	AISI 316L SS		U8	Pipe 3/4" Sch 80	
ME	AISI 310 SS		13. PROCESS CONNECTION TYPE		KW
MQ	Inconel 600		KW	Adjustable connection	
7. SHEATH DIAMETER (for X6)			M60	KX	Fixed connection
M30	3.0 mm			14. PROCESS CONNECTION	
M50	5.0 mm	14N		1/2" NPT (M)	
M60	6.0 mm	15N		3/4" NPT (M)	
M80	8.0 mm	14B	1/2" BSP (M)		
OR		15B	3/4" BSP (M)		
7. SHEATH DIAMETER (for X7)		W10	16N	1" NPT (M)	
W10	10 AWG (2.588 mm)		18N	2" NPT (M)	
W14	14 AWG (1.627 mm)		16B	1" BSP (M)	
W20	20 AWG (0.811 mm)	BZ	16B	2" BSP (M)	
8. HEAD ENCLSURE			A25	1.5" RF 150# as per ANSI B 16.5	
BZ	WP, IP 65, threaded cover		A26	1.5" RF 300# as per ANSI B 16.5	
BX	WP, IP 67, threaded cover		A27	1.5" RF 600# as per ANSI B 16.5	
BS	Flame proof, IP 67, Gr IIA, IIB		A31	2" RF 150# as per ANSI B 16.5	
BT	Explosion proof, IP 67, Gr IIC		A32	2" RF 300# as per ANSI B 16.5	
BV	WP, IP 65, Hinged type		A33	2" RF 600# as per ANSI B 16.5	
BY	WP, IP 65, cover fitted with 2 screws				
BU	Ex-Proof to CSA, FM, ATEX [EEx-d]				

ORDERING CODES

15. PROCESS CONNECTION MATERIAL

MB	ASTM A 105 (Carbon Steel)
MC	AISI 304 SS
MF	AISI 316 SS

16. IMMERSION LENGTH (IL)

XXXXX 50 mm up to 25,000 mm

OR

16. TOTAL LENGTH (TL)

XXXXX 50 mm up to 25,000 mm

17. EXTENSION LENGTH (XL)

XXX 50 mm up to 250 mm

MB

150

250

100

18. OTHER OPTIONS

TB	Calibration Certificate
XF	Tag plate, AISI 304 SS
KD	SC, cable gland, Ni-brass WP
KE	DC, cable gland, Ni-brass WP
KJ	SC, cable gland, Ni-brass FP
KK	DC, cable gland, Ni-brass FP
KF	SC, cable gland, AISI 304 SS WP
KG	DC, cable gland, AISI 304 SS WP
KL	SC, cable gland, AISI 304 SS FP
KM	DC, cable gland, AISI 304 SS FP
KH	SC, cable gland, AISI 316 SS WP
KI	DC, cable gland, AISI 316 SS WP
KN	SC, cable gland, AISI 316 SS FP
KO	DC, cable gland, AISI 316 SS FP
KB	Plug fitting for CE, AISI 304 SS
KC	Plug fitting for CE, AISI 316 SS
KU	Plug fitting for CE, Aluminum
KS	SS base plate for transmitter
KT	Head mount transmitter

XX

Ordering Example : T304-K-P-V-U-MF-M60-BZ-ML-C0-MF-U5-KW-15N-MB-150/250-100

NOTES:

1. Other sheath diameters, connections are available, please contact factory for details.
2. WP = Weatherproof, FP = Flame proof, SC = Single Compression, DC = Double Compression, CE = Cable Entry
3. Transmitter output shall be 4...20 mA as standard, any other output required, please contact factory for details.