

## FEATURES

- Weld-Pad connection
- Mineral insulated
- Exchangeable insert
- Spring loaded design

## APPLICATION

- Surface temperature
- Measurement of Heater tubes on flat surfaces
- Power & Utilities

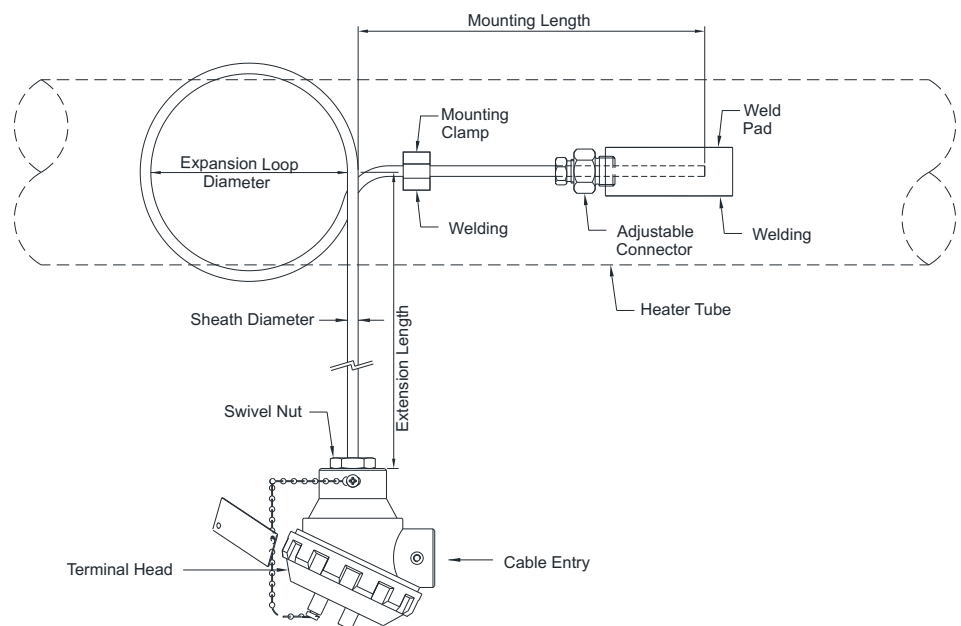
### Weld-pad Mounting



### STANDARD SPECIFICATIONS

Element	:	Pt-100, class B
Range	:	-200...400°C
Wire combination	:	Simplex, 3 Wire
Sheath material	:	AISI 316 SS
Sheath diameter	:	6.0 mm
Head enclosure	:	Weatherproof, IP 65, threaded cover
Enclosure material	:	Die-cast aluminum
Cable entry	:	3/4" ET (F), 1 No.
Mounting type	:	Bracket Mounting for Head
Weld pad size	:	50 mm X 25 mm X 25 mm
Weld pad material	:	AISI 316 SS
Total length	:	350 mm

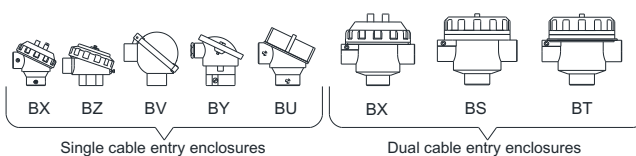
### DIMENSIONAL DRAWING



NOTE :- TOTAL LENGTH = Extension Length + Perimeter of Expansion Loop + Mounting Length

## REFERENCE

IEC-751 / DIN 43760



## ORDERING CODES

## 1. ELEMENT

<b>0</b>	Pt100, class A	<b>1</b>	Pt100, class B
<b>2</b>	Pt500, class A	<b>3</b>	Pt500, class B
<b>4</b>	Pt1000, class A	<b>5</b>	Pt1000, class B

## 2. RANGE

<b>97C</b>	-200...400°C	<b>98C</b>	0...600°C
------------	--------------	------------	-----------

## 3. WIRE COMBINATION

<b>A</b>	Simplex, 2-Wire	<b>C</b>	Simplex, 3-Wire
<b>D</b>	Simplex, 4-Wire	<b>F</b>	Duplex, 2-Wire
<b>H</b>	Duplex, 3-Wire	<b>I</b>	Duplex, 4-Wire

## 4. SHEATH MATERIAL

<b>MF</b>	AISI 316 SS	<b>MG</b>	AISI 316L SS
-----------	-------------	-----------	--------------

## 5. SHEATH DIAMETER

<b>M30</b>	3.0 mm <sup>2</sup>	<b>M50</b>	5.0 mm
<b>M60</b>	6.0 mm	<b>M80</b>	8.0 mm

## 6. HEAD ENCLOSURE

<b>BZ</b>	WP, IP 65, threaded cover
<b>BX</b>	WP, IP 67, threaded cover
<b>BS</b>	Flame proof, IP 67, Gr IIA, IIB
<b>BT</b>	Explosion proof, IP 67, Gr IIC
<b>BV</b>	WP, IP 65, Hinged type
<b>BY</b>	WP, IP 65, cover fitted with 2 screws
<b>BU</b>	Ex-Proof to CSA,FM,ATEX [EEx-d]

## 7. ENCLOSURE MATERIAL

<b>ML</b>	Die-cast aluminum		
<b>MC</b>	AISI 304 SS	<b>MF</b>	AISI 316 SS

## 8. CABLE ENTRY

<b>C0</b>	3/4" ET (F), 1 No.
<b>C1</b>	1/2" NPT (F), 1 No.
<b>C2</b>	M20 x 1.5mm (F), 1 No.
<b>C3</b>	3/4" NPT (F), 1 No.
<b>C5</b>	3/4" ET (F), 2 Nos.
<b>C6</b>	1/2" NPT (F), 2 Nos.
<b>C8</b>	M20 x 1.5mm (F), 2 Nos.
<b>C9</b>	3/4" NPT (F), 2 Nos.

## 9. MOUNTING TYPE

<b>B0</b>	Local mounting, no bracket
<b>B1</b>	Bracket mounting, for head
<b>B2</b>	2" Pipe mounting bracket
<b>B3</b>	Surface mounting, for JB

## 10. WELD PAD / INTEGRAL COLLAR SIZE

<b>W0</b>	Rectangle, 100 x 25 x 25 mm
<b>W1</b>	Rectangle, 100 x 50 x 50 mm
<b>W2</b>	Rectangle, 50 x 25 x 25 mm
<b>W4</b>	Integral collar, 30 x 19 x 10 mm
<b>W5</b>	Integral collar, 40 x 19 x 10 mm
<b>W6</b>	Integral collar, 50 x 19 x 10 mm

## 11. WELD PAD MATERIAL

<b>MF</b>	AISI 316 SS
<b>ME</b>	AISI 310 SS
<b>M6</b>	AISI 446 SS
<b>MQ</b>	Inconel 600

## 12. TOTAL LENGTH (TL)

<b>XXXXX</b>	50 mm up to 25,000 mm
--------------	-----------------------

## 13. OTHER OPTIONS

<b>TB</b>	Calibration Certificate
<b>XF</b>	Tag plate, AISI 304 SS
<b>KD</b>	SC, cable gland, Ni-brass WP
<b>KE</b>	DC, cable gland, Ni-brass WP
<b>KJ</b>	SC, cable gland, Ni-brass FP
<b>KK</b>	DC, cable gland, Ni-brass FP
<b>KF</b>	SC, cable gland, AISI 304 SS WP
<b>KG</b>	DC, cable gland, AISI 304 SS WP
<b>KL</b>	SC, cable gland, AISI 304 SS FP
<b>KM</b>	DC, cable gland, AISI 304 SS FP
<b>KH</b>	SC, cable gland, AISI 316 SS WP
<b>KI</b>	DC, cable gland, AISI 316 SS WP
<b>KN</b>	SC, cable gland, AISI 316 SS FP
<b>KO</b>	DC, cable gland, AISI 316 SS FP
<b>KB</b>	Plug fitting for CE, AISI 304 SS
<b>KC</b>	Plug fitting for CE, AISI 316 SS
<b>KU</b>	Plug fitting for CE, Aluminum
<b>KS</b>	SS base plate for transmitter
<b>KT</b>	Head mount transmitter

Ordering Example : R301-1-97C-C-MF-M60-BZ-ML-C0-B1-W2-MF-350

## NOTES:

- Other sheath diameters, materials and connections are available, please contact factory for details.
- Not available in Double, 4-Wire combinations.
- WP = Weatherproof, FP = Flame proof, SC = Single Compression, DC = Double Compression, CE = Cable Entry, JB = Junction Box.
- Transmitter output shall be 4...20 mA as standard, any other output required, please contact factory for details.

## FEATURES

- Integrated Protecting Tube
- Mineral insulated
- Transmitter mountable
- Exchangeable insert
- Spring loaded design

## APPLICATION

- Chemical & petrochemical
- Oil & gas application
- Water, waste-water treatment
- Power & Utilities
- Air & flue gas services
- Furnaces, Kilns & Ovens

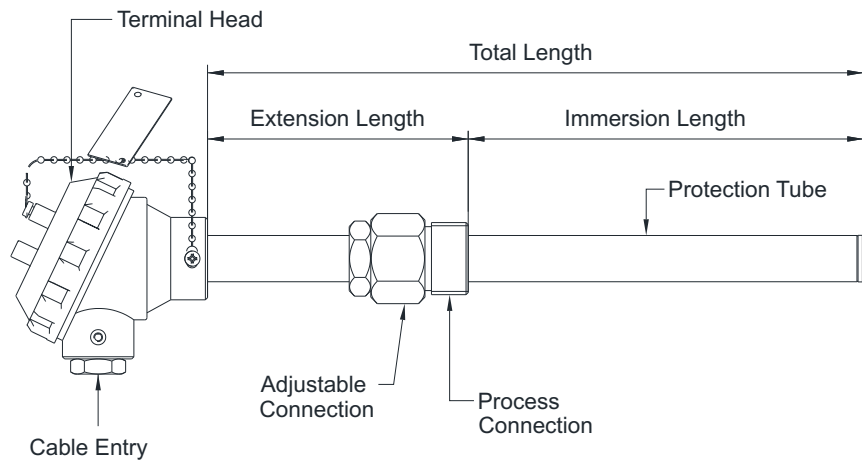
### Threaded



### STANDARD SPECIFICATIONS

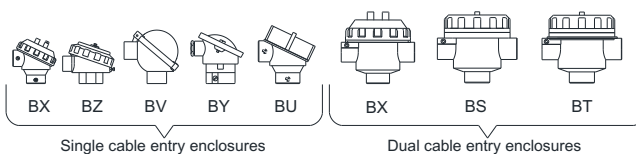
Element	:	Pt-100, class B
Range	:	-200...400°C
Wire combination	:	Simplex, 3 Wire
Sheath material	:	AISI 316 SS
Sheath diameter	:	6.0 mm
Head enclosure	:	Weatherproof, IP 65, threaded cover
Enclosure material	:	Die-cast aluminum
Cable entry	:	3/4" ET (F), 1 No.
Head extension	:	Head with female threading
Protecting tube material	:	AISI 316 SS
Protecting tube size	:	1/2" Sch. 40
Process connection type	:	Adjustable
Process connection	:	3/4" NPT (M) / 3/4" BSP (M)
Process connection material	:	AISI 304 SS
Immersion Length	:	150 mm
Extension Length	:	100 mm

### DIMENSIONAL DRAWING



## REFERENCE

IEC-751 / DIN 43760



## ORDERING CODES

## 1. ELEMENT

<b>0</b>	Pt100, class A	<b>1</b>	Pt100, class B
<b>2</b>	Pt500, class A	<b>3</b>	Pt500, class B
<b>4</b>	Pt1000, class A	<b>5</b>	Pt1000, class B

## 2. RANGE

<b>97C</b>	-200...400°C	<b>98C</b>	0...600°C
------------	--------------	------------	-----------

## 3. WIRE COMBINATION

<b>A</b>	Simplex, 2-Wire	<b>C</b>	Simplex, 3-Wire
<b>D</b>	Simplex, 4-Wire	<b>F</b>	Duplex, 2-Wire
<b>H</b>	Duplex, 3-Wire	<b>I</b>	Duplex, 4-Wire

## 4. SHEATH MATERIAL

<b>MF</b>	AISI 316 SS	<b>MG</b>	AISI 316L SS
-----------	-------------	-----------	--------------

## 5. SHEATH DIAMETER

<b>M30</b>	3.0 mm <sup>2</sup>	<b>M50</b>	5.0 mm
<b>M60</b>	6.0 mm	<b>M80</b>	8.0 mm

## 6. HEAD ENCLOSURE

<b>BZ</b>	WP, IP 65, threaded cover
<b>BX</b>	WP, IP 67, threaded cover
<b>BS</b>	Flame proof, IP 67, Gr IIA, IIB
<b>BT</b>	Explosion proof, IP 67, Gr IIC
<b>BV</b>	WP, IP 65, Hinged type
<b>BY</b>	WP, IP 65, cover fitted with 2 screws
<b>BU</b>	Ex-Proof to CSA,FM,ATEX [Ex-d]

## 7. ENCLOSURE MATERIAL

<b>ML</b>	Die-cast aluminum		
<b>MC</b>	AISI 304 SS	<b>MF</b>	AISI 316 SS

## 8. CABLE ENTRY

<b>C0</b>	3/4" ET (F), 1 No.
<b>C1</b>	1/2" NPT (F), 1 No.
<b>C2</b>	M20 x 1.5mm (F), 1 No.
<b>C3</b>	3/4" NPT (F), 1 No.
<b>C5</b>	3/4" ET (F), 2 Nos.
<b>C6</b>	1/2" NPT (F), 2 Nos.
<b>C8</b>	M20 x 1.5mm (F), 2 Nos.
<b>C9</b>	3/4" NPT (F), 2 Nos.

## 9. PROTECTION TUBE MATERIAL

<b>MC</b>	AISI 304 SS	<b>MF</b>	AISI 316 SS
<b>MG</b>	AISI 316L SS		

## 10. PROTECTION TUBE

<b>U1</b>	Tube Ø10 x 1.5 mm THK	<b>U5</b>	
<b>U2</b>	Tube Ø12 x 1.5 mm THK		
<b>U3</b>	Pipe 3/8" Sch 40	<b>U4</b>	Pipe 3/8" Sch 80
<b>U5</b>	Pipe 1/2" Sch 40	<b>U6</b>	Pipe 1/2" Sch 80
<b>U7</b>	Pipe 3/4" Sch 40	<b>U8</b>	Pipe 3/4" Sch 80

## 11. PROCESS CONNECTION TYPE

<b>KW</b>	Adjustable connection	<b>KW</b>	
<b>KX</b>	Fixed connection		

## 12. PROCESS CONNECTION

<b>14N</b>	1/2" NPT (M)	<b>15N</b>	3/4" NPT (M)
<b>14B</b>	1/2" BSP (M)	<b>15B</b>	3/4" BSP (M)
<b>16N</b>	1" NPT (M)	<b>18N</b>	2" NPT (M)
<b>16B</b>	1" BSP (M)	<b>16B</b>	2" BSP (M)

## 13. PROCESS CONNECTION MATERIAL

<b>MC</b>	AISI 304 SS	<b>MF</b>	AISI 316 SS
-----------	-------------	-----------	-------------

## 14. TOTAL LENGTH (TL)

<b>XXXX</b>	50 mm up to 5,000 mm
	OR

## 14. IMMERSION LENGTH (IL)

<b>XXXX</b>	50 mm up to 5,000 mm
-------------	----------------------

## 15. EXTENSION LENGTH (XL)

<b>XXX</b>	50 mm up to 250 mm
------------	--------------------

## 16. OTHER OPTIONS

<b>TB</b>	Calibration Certificate	<b>XX</b>	
<b>XF</b>	Tag plate, AISI 304 SS		
<b>KD</b>	SC, cable gland, Ni-brass WP		
<b>KE</b>	DC, cable gland, Ni-brass WP		
<b>KJ</b>	SC, cable gland, Ni-brass FP		
<b>KK</b>	DC, cable gland, Ni-brass FP		
<b>KF</b>	SC, cable gland, AISI 304 SS WP		
<b>KG</b>	DC, cable gland, AISI 304 SS WP		
<b>KL</b>	SC, cable gland, AISI 304 SS FP		
<b>KM</b>	DC, cable gland, AISI 304 SS FP		
<b>KH</b>	SC, cable gland, AISI 316 SS WP		
<b>KI</b>	DC, cable gland, AISI 316 SS WP		
<b>KN</b>	SC, cable gland, AISI 316 SS FP		
<b>KO</b>	DC, cable gland, AISI 316 SS FP		
<b>KB</b>	Plug fitting for CE, AISI 304 SS		
<b>KC</b>	Plug fitting for CE, AISI 316 SS		
<b>KU</b>	Plug fitting for CE, Aluminum		
<b>KS</b>	SS base plate for transmitter		
<b>KT</b>	Head mount transmitter		

## Ordering Example : R302-1-97C-C-MF-M60-BZ-ML-C0-MF-U5-KW-15N-MC-250/150-100

## NOTES:

- Other sheath diameters, materials and connections are available, please contact factory for details.
- Not available in Double, 4-Wire combinations.
- WP = Weatherproof, FP = Flame proof, SC = Single Compression, DC = Double Compression, CE = Cable Entry
- Transmitter output shall be 4...20 mA as standard, any other output required, please contact factory for details.

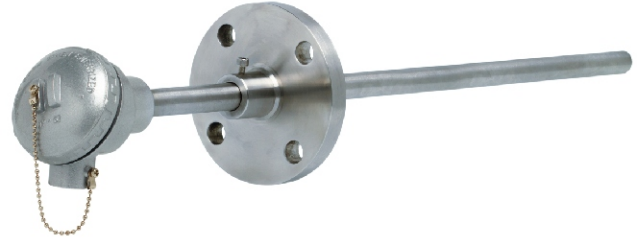
## FEATURES

- Integrated Protecting Tube
- Mineral insulated
- Transmitter mountable
- Exchangeable insert
- Spring loaded design

## APPLICATION

- Chemical & petrochemical
- Oil & gas application
- Water, waste-water treatment
- Power & Utilities
- Air & flue gas services
- Furnaces, Kilns & Ovens

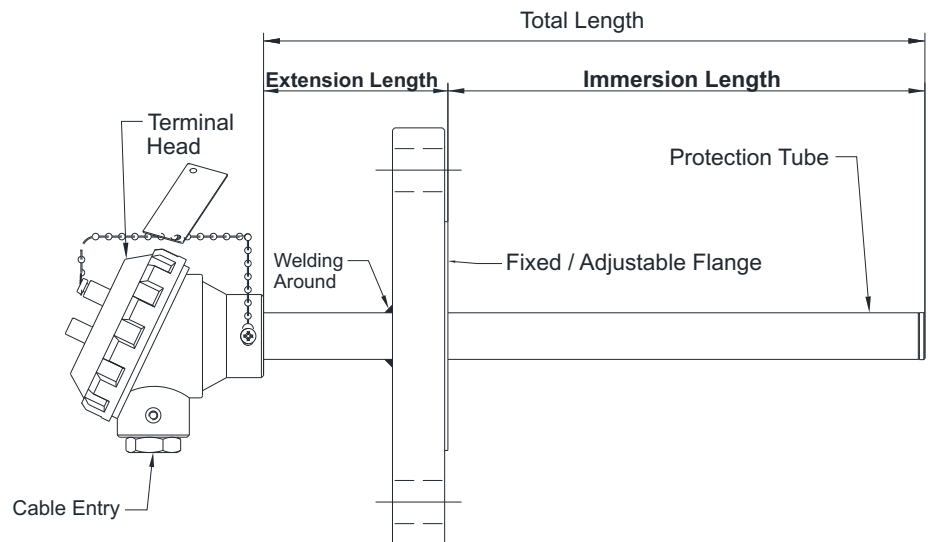
### Flanged



### STANDARD SPECIFICATIONS

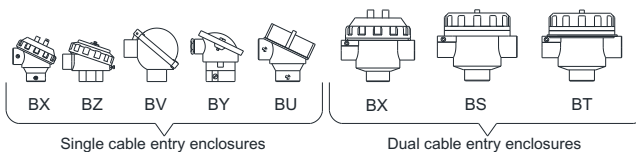
Element	:	Pt-100, class B
Range	:	-200...400°C
Wire combination	:	Simplex, 3 Wire
Sheath material	:	AISI 316 SS
Sheath diameter	:	6.0 mm
Head enclosure	:	Weatherproof, IP 65, threaded cover
Enclosure material	:	Die-cast aluminum
Cable entry	:	3/4" ET (F), 1 No.
Head extension	:	Head with female threading
Protecting tube material	:	AISI 316 SS
Protecting tube size	:	1/2" Sch. 40
Process connection type	:	Adjustable
Process connection	:	1.5" RF 150# as per ANSI B 16.5
Process connection material	:	AISI 304 SS
Immersion Length	:	150 mm
Extension Length	:	100 mm

### DIMENSIONAL DRAWING



## REFERENCE

IEC-751 / DIN 43760



## ORDERING CODES

### 1. ELEMENT

0	Pt100, class A
1	Pt100, class B
2	Pt500, class A
3	Pt500, class B
4	Pt1000, class A
5	Pt1000, class B

1

### 2. RANGE

97C	-200...400°C
98C	0...600°C

97C

### 3. WIRE COMBINATION

A	Simplex, 2-Wire
C	Simplex, 3-Wire
D	Simplex, 4-Wire
F	Duplex, 2-Wire
H	Duplex, 3-Wire
I	Duplex, 4-Wire

C

### 4. SHEATH MATERIAL

MF	AISI 316 SS
MG	AISI 316L SS

MF

### 5. SHEATH DIAMETER

M30	3.0 mm <sup>2</sup>
M50	5.0 mm
M60	6.0 mm
M80	8.0 mm

M60

### 6. HEAD ENCLOSURE

BZ	WP, IP 65, threaded cover
BX	WP, IP 67, threaded cover
BS	Flame proof, IP 67, Gr IIA, IIB
BT	Explosion proof, IP 67, Gr IIC
BV	WP, IP 65, Hinged type
BY	WP, IP 65, cover fitted with 2 screws
BU	Ex-Proof to CSA,FM,ATEX [EEx-d]

BZ

### 7. ENCLOSURE MATERIAL

ML	Die-cast aluminum
MC	AISI 304 SS
MF	AISI 316 SS

ML

### 8. CABLE ENTRY

C0	3/4" ET (F), 1 No.
C1	1/2" NPT (F), 1 No.
C2	M20 x 1.5mm (F), 1 No.
C3	3/4" NPT (F), 1 No.
C5	3/4" ET (F), 2 Nos.
C6	1/2" NPT (F), 2 Nos.
C8	M20 x 1.5mm (F), 2 Nos.
C9	3/4" NPT (F), 2 Nos.

C0

### 9. PROTECTION TUBE MATERIAL

MC	AISI 304 SS
MF	AISI 316 SS
MG	AISI 316L SS

MF

### 10. PROTECTION TUBE

U1	Tube Ø10 x 1.5 mm THK
U2	Tube Ø12 x 1.5 mm THK
U3	Pipe 3/8" Sch 40
U4	Pipe 3/8" Sch 80
U5	Pipe 1/2" Sch 40
U6	Pipe 1/2" Sch 80
U7	Pipe 3/4" Sch 40
U8	Pipe 3/4" Sch 80

U5

### 11. PROCESS CONNECTION TYPE

KW	Adjustable connection
KX	Fixed connection

KW

### 12. PROCESS CONNECTION

A25	1.5" RF 150# as per ANSI B 16.5
A26	1.5" RF 300# as per ANSI B 16.5
A27	1.5" RF 600# as per ANSI B 16.5
A31	2" RF 150# as per ANSI B 16.5
A32	2" RF 300# as per ANSI B 16.5
A33	2" RF 600# as per ANSI B 16.5
T99	Oval flange

A25

### 13. PROCESS CONNECTION MATERIAL

MC	AISI 304 SS
MF	AISI 316 SS

MC

#### NOTES:

1. Other sheath diameters, materials and connections are available, please contact factory for details.
2. Not available in Double, 4-Wire combinations.
3. WP = Weatherproof, FP = Flame proof, SC = Single Compression, DC = Double Compression, CE = Cable Entry
4. Transmitter output shall be 4...20 mA as standard, any other output required, please contact factory for details.

### ORDERING CODES

#### 14. TOTAL LENGTH (TL)

XXXX 50 mm up to 5,000 mm

250

#### 14. IMMERSION LENGTH (IL) OR

XXXX 50 mm up to 5,000 mm

150

#### 15. EXTENSION LENGTH (TL)

XXX 50 mm up to 250 mm

100

#### 16. OTHER OPTIONS

**TB** Calibration Certificate  
**XF** Tag plate, AISI 304 SS  
**XU** Tag plate, Aluminum  
**KD** SC, cable gland, Ni-brass WP  
**KE** DC, cable gland, Ni-brass WP  
**KJ** SC, cable gland, Ni-brass FP  
**KK** DC, cable gland, Ni-brass FP  
**KF** SC, cable gland, AISI 304 SS WP  
**KG** DC, cable gland, AISI 304 SS WP  
**KL** SC, cable gland, AISI 304 SS FP  
**KM** DC, cable gland, AISI 304 SS FP  
**KH** SC, cable gland, AISI 316 SS WP  
**KI** DC, cable gland, AISI 316 SS WP  
**KN** SC, cable gland, AISI 316 SS FP  
**KO** DC, cable gland, AISI 316 SS FP  
**KB** Plug fitting for CE, AISI 304 SS  
**KC** Plug fitting for CE, AISI 316 SS  
**KU** Plug fitting for CE, Aluminum  
**KS** SS base plate for transmitter  
**KT** Head mount transmitter

XX

**Ordering Example : R303-1-97C-C-MF-M60-BZ-ML-C0-MF-U5-KW-A25-MC-250/150-100**

#### NOTES:

1. Other sheath diameters, materials and connections are available, please contact factory for details.
2. Not available in Double, 4-Wire combinations.
3. WP = Weatherproof, FP = Flame proof, SC = Single Compression, DC = Double Compression, CE = Cable Entry
4. Transmitter output shall be 4...20 mA as standard, any other output required, please contact factory for details.

## FEATURES

- Weld-Pad connection
- Mineral insulated
- Exchangeable insert
- Spring loaded design

## APPLICATION

- Pharmaceutical industries
- Food & Beverage industries

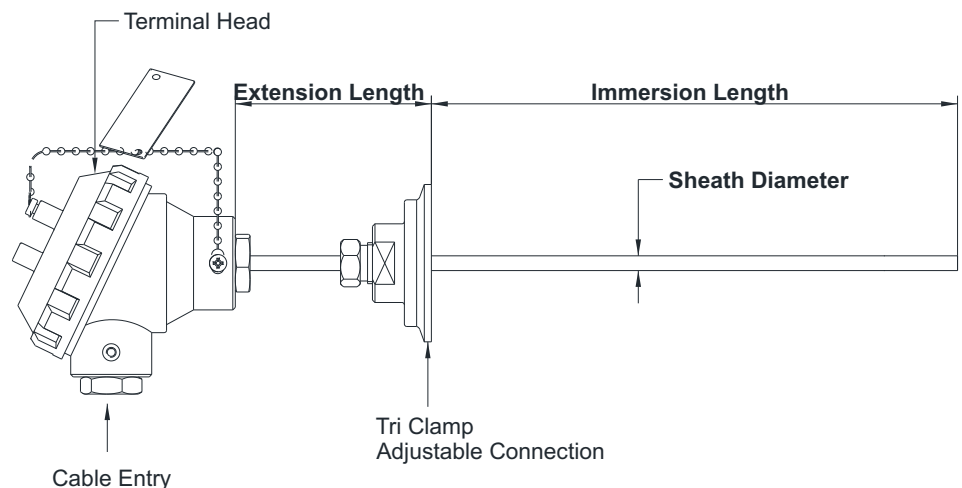
### Tri-clamp Connection



### STANDARD SPECIFICATIONS

Element	:	Pt-100, class B
Range	:	-200...400°C
Wire combination	:	Simplex, 3 Wire
Sheath material	:	AISI 316 SS
Sheath diameter	:	6.0 mm
Head enclosure	:	Weatherproof, IP 65, threaded cover
Enclosure material	:	Die-cast aluminum
Cable entry	:	3/4" ET (F), 1 No.
Head extension	:	Tri-clamp connection
Head extension material	:	AISI 316 SS
Immersion length	:	150 mm
Extension length	:	50 mm
Process connection type	:	Adjustable
Process connection	:	1 1/2" Tri-clamp

### DIMENSIONAL DRAWING



## REFERENCE

IEC-751 / DIN 43760



## ORDERING CODES

### 1. ELEMENT

<b>0</b>	Pt100, class A	<b>1</b>	Pt100, class B
<b>2</b>	Pt500, class A	<b>3</b>	Pt500, class B
<b>4</b>	Pt1000, class A	<b>5</b>	Pt1000, class B

### 2. RANGE

<b>97C</b>	-200...400°C	<b>98C</b>	0...600°C
------------	--------------	------------	-----------

### 3. WIRE COMBINATION

<b>A</b>	Simplex, 2-Wire	<b>C</b>	Simplex, 3-Wire
<b>D</b>	Simplex, 4-Wire	<b>F</b>	Duplex, 2-Wire
<b>H</b>	Duplex, 3-Wire	<b>I</b>	Duplex, 4-Wire

### 4. SHEATH MATERIAL

<b>MF</b>	AISI 316 SS	<b>MG</b>	AISI 316L SS
-----------	-------------	-----------	--------------

### 5. SHEATH DIAMETER

<b>M30</b>	3.0 mm <sup>2</sup>	<b>M50</b>	5.0 mm
<b>M60</b>	6.0 mm	<b>M80</b>	8.0 mm

### 6. HEAD ENCLOSURE

<b>BZ</b>	WP, IP 65, threaded cover
<b>BX</b>	WP, IP 67, threaded cover
<b>BS</b>	Flame proof, IP 67, Gr IIA, IIB
<b>BT</b>	Explosion proof, IP 67, Gr IIC
<b>BV</b>	WP, IP 65, Hinged type
<b>BY</b>	WP, IP 65, cover fitted with 2 screws
<b>BU</b>	Ex-Proof to CSA,FM,ATEX [EEx-d]

### 7. ENCLOSURE MATERIAL

<b>ML</b>	Die-cast aluminum		
<b>MC</b>	AISI 304 SS	<b>MF</b>	AISI 316 SS

### 8. CABLE ENTRY

<b>C0</b>	3/4" ET (F), 1 No.
<b>C1</b>	1/2" NPT (F), 1 No.
<b>C2</b>	M20 x 1.5mm (F), 1 No.
<b>C3</b>	3/4" NPT (F), 1 No.
<b>C5</b>	3/4" ET (F), 2 Nos.
<b>C6</b>	1/2" NPT (F), 2 Nos.
<b>C8</b>	M20 x 1.5mm (F), 2 Nos.
<b>C9</b>	3/4" NPT (F), 2 Nos.

### 9. HEAD EXTENSION MATERIAL

<b>MC</b>	AISI 316 SS	<b>MF</b>	AISI 316 SS
-----------	-------------	-----------	-------------

### 10. IMMERSION LENGTH (IL)

<b>XXXXX</b>	50 mm up to 10,000 mm
--------------	-----------------------

### 11. HEAD EXTENSION LENGTH (XL)

<b>XXX</b>	25 mm up to 250 mm
------------	--------------------

### 12. PROCESS CONNECTION TYPE

<b>KW</b>	Adjustable connection
<b>KX</b>	Fixed connection

### 13. PROCESS CONNECTION

<b>T01</b>	1" Tri-clamp connection
<b>T02</b>	2" Tri-clamp connection
<b>T15</b>	1½" Tri-clamp connection
<b>T25</b>	2½" Tri-clamp connection

### 14. OTHER OPTIONS

<b>TB</b>	Calibration Certificate
<b>XF</b>	Tag plate, AISI 304 SS
<b>KD</b>	SC, cable gland, Ni-brass WP
<b>KE</b>	DC, cable gland, Ni-brass WP
<b>KJ</b>	SC, cable gland, Ni-brass FP
<b>KK</b>	DC, cable gland, Ni-brass FP
<b>KF</b>	SC, cable gland, AISI 304 SS WP
<b>KG</b>	DC, cable gland, AISI 304 SS WP
<b>KL</b>	SC, cable gland, AISI 304 SS FP
<b>KM</b>	DC, cable gland, AISI 304 SS FP
<b>KH</b>	SC, cable gland, AISI 316 SS WP
<b>KI</b>	DC, cable gland, AISI 316 SS WP
<b>KN</b>	SC, cable gland, AISI 316 SS FP
<b>KO</b>	DC, cable gland, AISI 316 SS FP
<b>KB</b>	Plug fitting for CE, AISI 304 SS
<b>KC</b>	Plug fitting for CE, AISI 316 SS
<b>KU</b>	Plug fitting for CE, Aluminum
<b>KS</b>	SS base plate for transmitter
<b>KT</b>	Head mount transmitter

**Ordering Example : R304-1-97C-C-MF-M60-BZ-ML-C0-MF-150-50-KW-T15**

#### NOTES:

- Other sheath diameters, materials and connections are available, please contact factory for details.
- Not available in Double, 4-Wire combinations.
- WP = Weatherproof, FP = Flame proof, SC = Single Compression, DC = Double Compression, CE = Cable Entry
- Transmitter output shall be 4...20 mA as standard, any other output required, please contact factory for details.
- NUN assembly in ASTM A105 is provided with Cd plating.

## FEATURES

- Flat & slim dimensions
- Resistance to shock, vibration & pressure
- Spring loaded design

## APPLICATION

- Stator winding temperature of
- Motors, Generators & Bearings

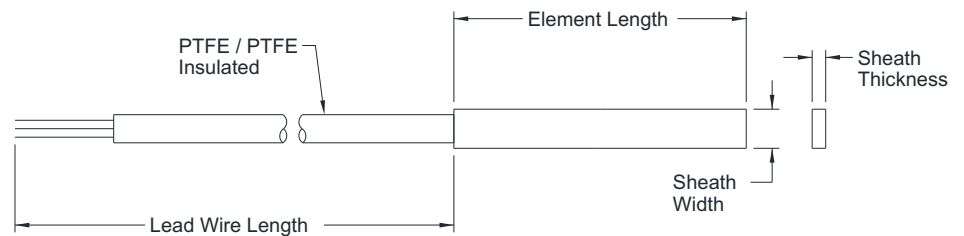
### Stator Winding RTD



### STANDARD SPECIFICATIONS

Element	:	Pt-100, class B
Range	:	0...155°C
Wire combination	:	Simplex, 3 Wire
Sheath material	:	Epoxy fiber glass
Sheath width	:	7 mm
Sheath thickness	:	1.5 mm
Element length	:	50 mm
Extension length	:	1000 mm
Lead wire type	:	PTFE / PTFE insulated

### DIMENSIONAL DRAWING



## REFERENCE

IEC-751 / DIN 43760

## ORDERING CODES

<b>1. ELEMENT</b>		<b>1</b>	<b>6. ELEMENT LENGTH (EL)</b>		<b>50</b>
<b>0</b>	Pt100, class A		<b>XXX</b>	25 mm up to 250 mm	
<b>1</b>	Pt100, class B				
<b>2. RANGE</b>		<b>55C</b>	<b>7. LEAD WIRE LENGTH (WL)</b>		<b>1000</b>
<b>55C</b>	0...155°C		<b>XXXXX</b>	Up to 25,000 mm	
<b>80C</b>	0...180°C				
<b>3. WIRE COMBINATION</b>		<b>C</b>	<b>8. LEAD WIRE TYPE</b>		<b>KQ</b>
<b>A</b>	Simplex, 2-Wire		<b>KP</b>	PTFE insulated	
<b>C</b>	Simplex, 3-Wire		<b>KQ</b>	PTFE / PTFE insulated	
<b>D</b>	Simplex, 4-Wire		<b>UZ</b>	PTFE, Flat insulated cables	
<b>4. SHEATH MATERIAL</b>		<b>M0</b>	<b>9. OTHER OPTIONS</b>		<b>XX</b>
<b>M0</b>	Epoxy fiber glass		<b>TB</b>	Calibration Certificate	
<b>5. SHEATH WIDTH</b>		<b>XX</b>			
<b>XX</b>	7 mm up to 25 mm				

**Ordering Example : R305-1-55C-C-M0-50-1000-KQ**

### NOTES:

1. Other sheath diameters, materials and connections are available, please contact factory for details.