

FEATURES

- General purpose
- Stainless steel case
- Dry / liquid filled

APPLICATION

- Municipal water supply
- Hydraulic & pneumatic

DN100



STANDARD PARAMETERS

Accuracy	:	CL 1.6
Ambient temperature	:	-40...+65°C (without dampening liquid)
	:	-20...+65°C (with dampening liquid)
Service temperature	:	150°C max.
Pressure limits	:	Steady pressure up to 75% of FS value
	:	Short time 1.3 x FS value for range up to 100 bar
	:	Short time 1.15 x FS value for ranges 100 up to 600 bar
	:	Short time 1.1 x FS value for ranges above 600 bar
Joints	:	Silver alloy brazing / soldering

MATERIAL OF CONSTRUCTION

Sensing element	:	Bourdon Tube (≤ 100 bar : C - type , > 100 bar : Helical)
Case & Ring material	:	AISI 304 SS (Bayonet type)
Bourdon tube & Shank	:	Phosphor Bronze
Movement mechanism	:	Copper Alloy
Dial	:	Aluminum, black graduation on white background
Pointer	:	Fixed, aluminum, black powder coated
Gaskets & filling plug	:	Neoprene
Window	:	Plexi glass

STANDARD SPECIFICATIONS

Dial size	:	DN100 / DN150
Range	:	-1...400 bar
Mounting pattern	:	Direct, Bottom connection
Process connection	:	1/2" NPT (M)
Ingress protection	:	IP 54 / IP 65
Execution	:	Dry / Dry but fillable, glycerin

STANDARD SPECIFICATIONS : DAMPENING LIQUID FILLED, GLYCERIN

Window	:	Safety glass
Dampening liquid	:	Glycerin 99.7% [Service temperature up to 65°C]

TEMPERATURE EFFECT

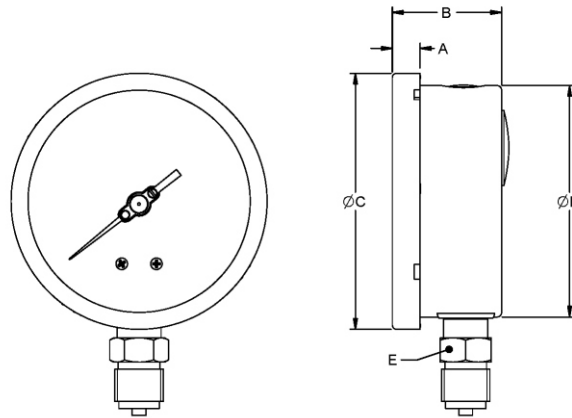
When temperature of the measuring system deviates from reference temperature (+20°C) max error $\pm 0.4\%$ / 10K of true scale value.

REFERENCE

EN 837-1

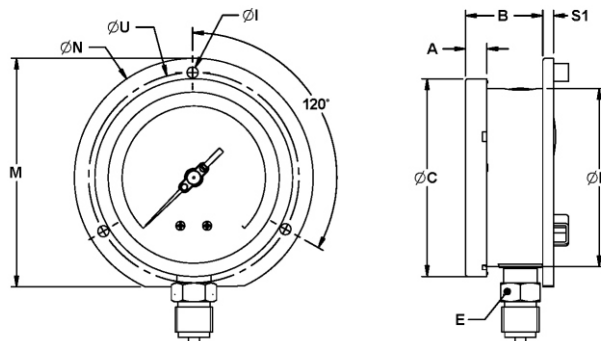
DIMENSIONAL DRAWING

Type B0



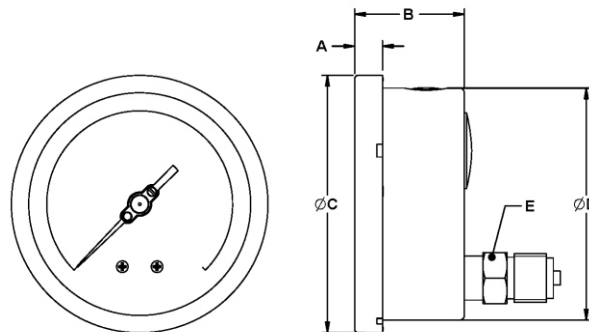
DN	A	B	ØC	ØD	E	Weight (grams)
100	12	48	111	100	SQ.22	506

Type B1



DN	A	B	ØC	ØD	E	ØI	M	ØN	S1	ØU	Weight (grams)
100	12	52	111	100	SQ.22	6	128	134	6	118	613

Type L0

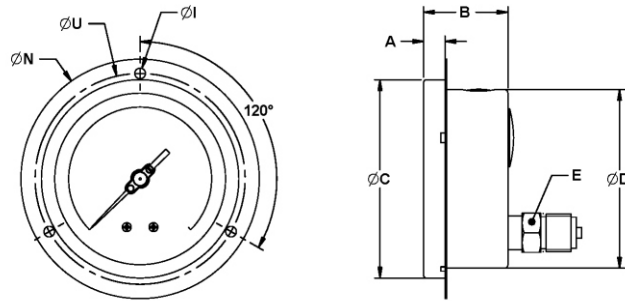


DN	A	B	ØC	ØD	E	Weight (grams)
100	12	48	111	100	SQ.22	506

All dimensions are in mm.

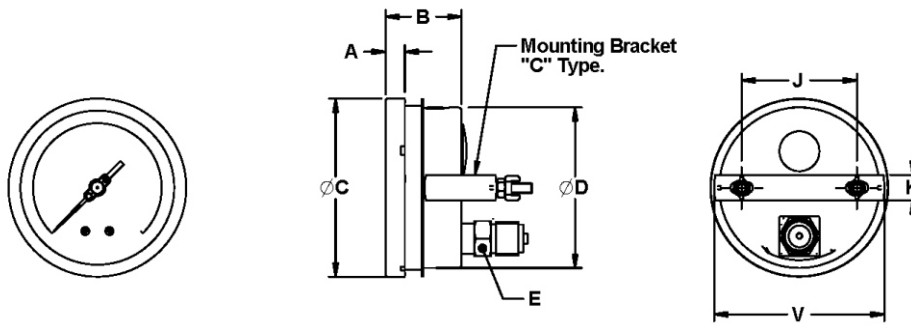
DIMENSIONAL DRAWING

Type L1



DN	A	B	$\varnothing C$	$\varnothing D$	E	$\varnothing I$	$\varnothing N$	$\varnothing U$	Weight (grams)
100	12	48	111	100	SQ.22	6	134	118	580

Type L2



DN	A	B	$\varnothing C$	$\varnothing D$	E	J	K	V	Weight (grams)
100	12	48	111	100	SQ.22	72	16	108	595

ORDERING CODES

1. DIAL SIZE		04	5. INGRESS PROTECTION		EV
04	100 mm / 4"		EV	IP 54	
2. RANGE		XXX	ER	IP 65	EB
XXX	Refer "Range Table"		6. EXECUTION		
3. MOUNTING PATTERN		B0	EA	Dry ³	XX
B0	Direct, Bottom connection		EB	Dry but fillable, glycerine	
B1	Wall/Surface/Projection mounting, Bottom Connection	14N	EG	Dampening liquid filled, glycerine	
L0	Lower, Back connection		7. OTHER OPTIONS		
L1	Panel/Front flange mounting, Lower Back connection	EO	Dampening screw, Cu Alloy		
L2	Panel/bracket mounting, Lower Back connection	EZ	Pointer stop on dial		
4. PROCESS CONNECTION		R9	Receiver gauge ²		
13B	3/8" BSP (M)	TA	5 - point calibration certificate		
14B	1/2" BSP (M)	XF	SS tag plate, AISI 304 SS		
14M	M20 X 1.5 mm (M)	XG	SS tag plate, AISI 316 SS		
14N	1/2" NPT (M)	XR	Custom designed dial		
		XT	Dial tag marking		

Ordering Example : P905-04-XXX-B0-14N-EV-EA

NOTES

1. For other connections, please contact factory.
2. Please specify the second scale required.
3. Available with Ingress Protection IP 54 (dust proof) only.
4. C.C = Calibration Certificate

FEATURES

- Rugged construction
- Stainless steel case
- Dry / liquid filled

APPLICATION

- Hydraulic & pneumatic
- Pumps & compressors
- Diesel engines
- Water applications

Economical



STANDARD PARAMETERS

Accuracy	:	CL 1.6
Ambient temperature	:	-40...+65°C (without dampening liquid)
	:	-20...+65°C (with dampening liquid)
Service temperature	:	150°C max.
Pressure limits	:	Steady pressure up to 75% of FS value
	:	Short time 1.3 x FS value for range up to 100 bar
	:	Short time 1.15 x FS value for ranges 100 up to 600 bar
	:	Short time 1.1 x FS value for ranges above 600 bar
Joints	:	Silver alloy brazing / soldering

MATERIAL OF CONSTRUCTION

Sensing element	:	Bourdon Tube (≤ 100 bar : C - type , > 100 bar : Helical)
Case & Ring material	:	AISI 304 SS (Bayonet type)
Bourdon tube & Shank	:	Phosphor Bronze
Movement mechanism	:	Copper Alloy
Dial	:	Aluminum, black graduation on white background
Pointer	:	Fixed, aluminum, black powder coated
Gaskets & filling plug	:	Silicon gasket & Neoprene filling plug
Window	:	Plexi glass

STANDARD SPECIFICATIONS

Dial size	:	DN50 / DN63 / DN80 / DN100
Range	:	-1...400 bar (DN50), -1...1,000 bar (DN63/DN80/DN100)
Mounting pattern	:	Direct, Bottom connection
Process connection	:	1/4" NPT (M) / 1/4" BSP (M)
Ingress protection	:	IP 65
Execution	:	Dry but fillable

STANDARD SPECIFICATIONS : DAMPENING LIQUID FILLED, GLYCERIN

Window	:	Safety glass
Dampening liquid	:	Glycerin 99.7% [Service temperature up to 65°C]

TEMPERATURE EFFECT

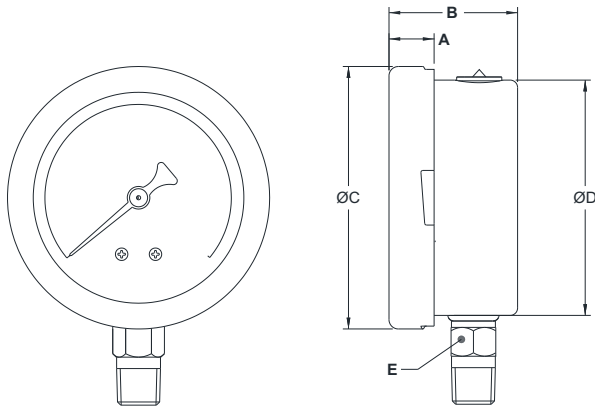
When temperature of the measuring system deviates from reference temperature (+20°C) max error $\pm 0.4\%$ / 10K of true scale value.

REFERENCE

EN 837-1

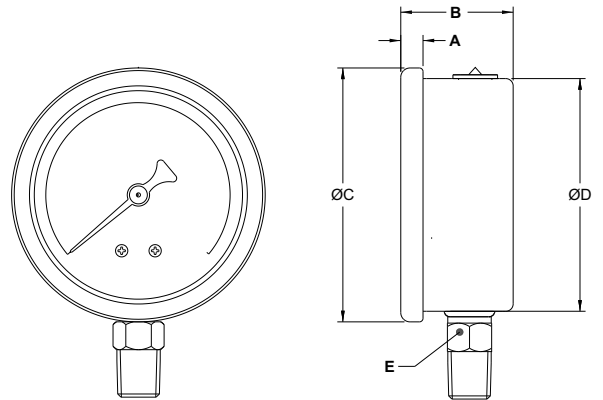
DIMENSIONAL DRAWING

Type B0, (Bayonet ring)



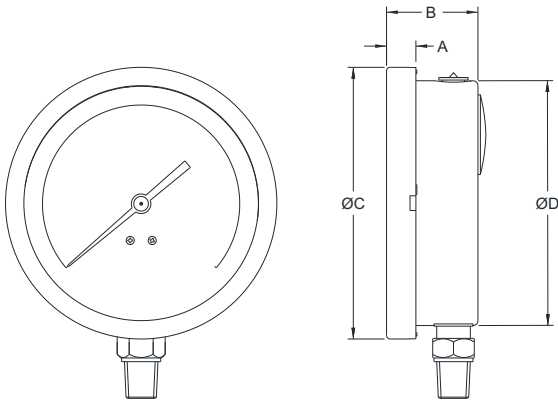
DN	A	B	ØC	ØD	E	Weight (grams)
50	9	34	58.5	51	A/F14	130
63	12	33	69.7	62.5	A/F14	250

Type B0, (Rolling ring)



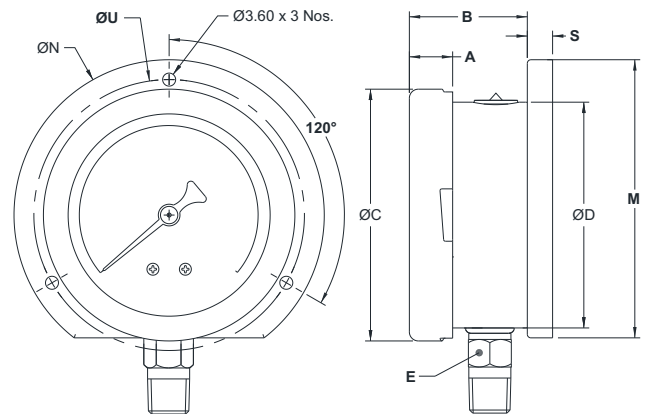
DN	A	B	ØC	ØD	E	Weight (grams)
50	5	32.5	57.5	51.5	A/F14	120
63	5	31.5	68	62.5	A/F14	240

Type B0, (Bayonet ring)



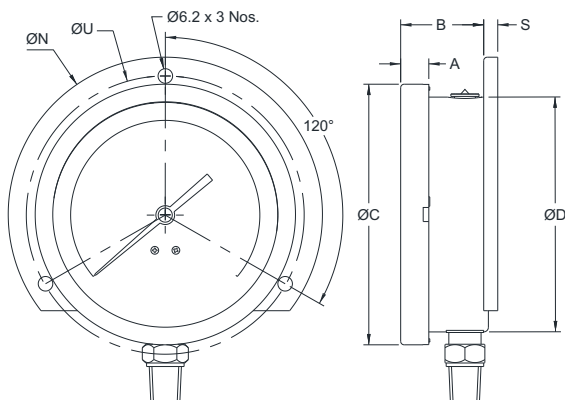
DN	A	B	ØC	ØD	E	Weight (grams)
80	9.5	33.5	89.5	80	A/F 14	328
100	12	38	111	100	A/F 14	398

Type B1, (Bayonet ring)



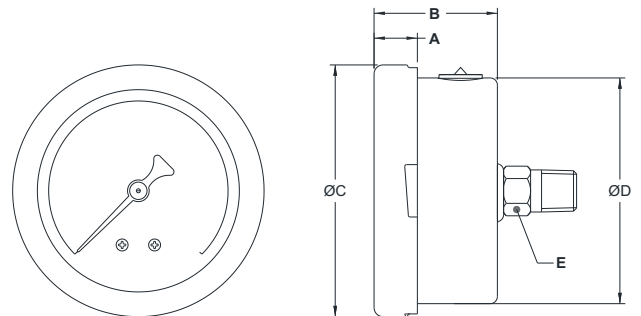
DN	A	B	ØC	ØD	E	ØN	ØU	M	S	Weight (grams)
63	12	33	69.7	62.5	A/F14	86	75	77	7	294

Type B1, (Bayonet ring)



DN	A	B	ØC	ØD	E	ØN	ØU	Weight (grams)
100	12	38	111	100	A/F 14	134	118	472

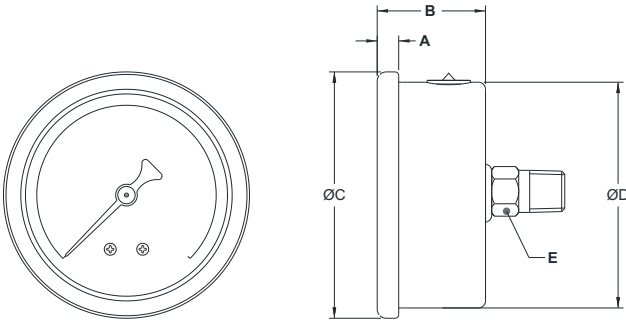
Type R0, (Bayonet ring)



DN	A	B	ØC	ØD	E	Weight (grams)
50	9	34	58.5	51	A/F14	130
63	12	33	69.7	62.5	A/F14	250

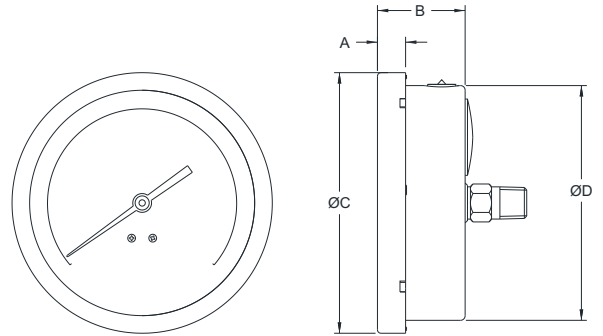
DIMENSIONAL DRAWING

Type R0, (Rolling ring)



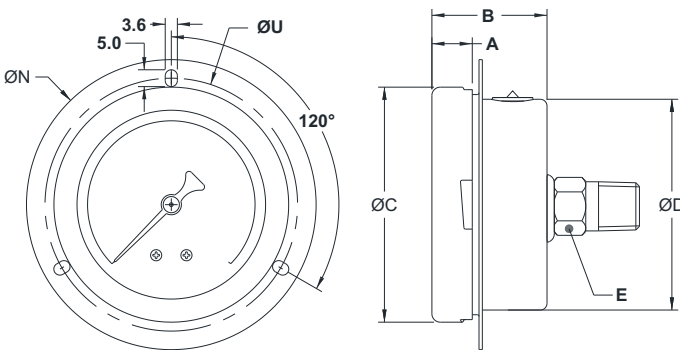
DN	A	B	ØC	ØD	E	Weight (grams)
50	5	33.5	57.5	51.5	A/F14	120
63	5	31.5	68	62.5	A/F14	240

Type R0, (Bayonet ring)



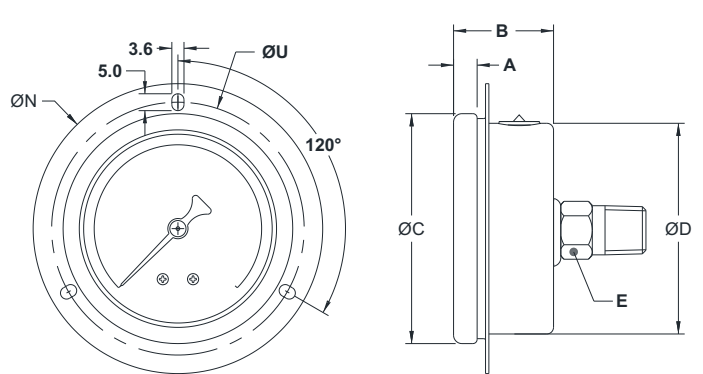
DN	A	B	ØC	ØD	E	Weight (grams)
80	9.5	33.5	89.5	80	A/F 14	328
100	12	38	111	100	A/F 14	398

Type R2, (Bayonet ring)



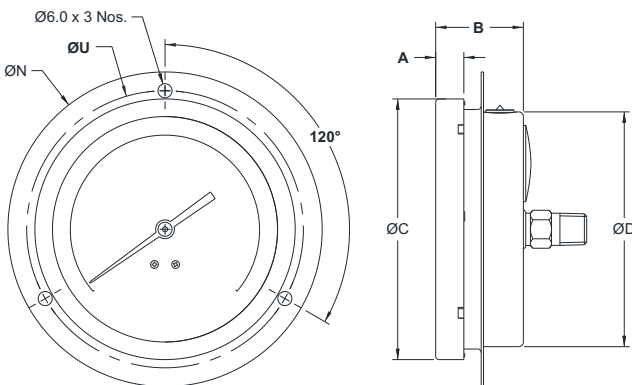
DN	A	B	ØC	ØD	E	ØN	ØU	Weight (grams)
63	12	33	69.7	62.5	A/F14	86	75	280

Type R2, (Rolling ring)



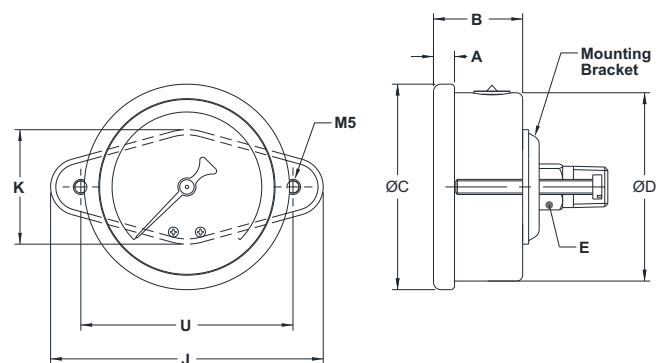
DN	A	B	ØC	ØD	E	ØN	ØU	Weight (grams)
63	5	31.5	68	62.5	A/F14	86	75	270

Type R2, (Bayonet ring)



DN	A	B	ØC	ØD	E	ØN	ØU	M	Weight (grams)
100	12	38	111	100	A/F 14	134	118	128	505

Type R3, (Bayonet ring)

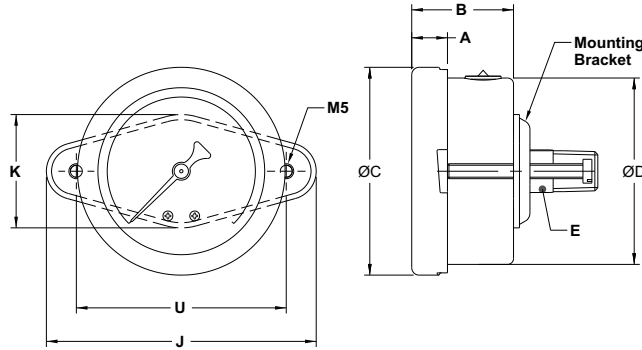


DN	A	B	ØC	ØD	E	ØU	J	K	Weight (grams)
50	5	33.5	57.5	51.5	A/F14	70.5	91	38	153
63	5	31.5	68	62.5	A/F14	70.5	91	38	274

All dimensions are in mm.

DIMENSIONAL DRAWING

Type R0, (Rolling ring)



DN	A	B	ØC	ØD	E	Weight (grams)
50	5	33.5	57.5	51.5	A/F14	120
63	5	31.5	68	62.5	A/F14	240

All dimensions are in mm.

ORDERING CODES

1. DIAL SIZE

- 02 50 mm / 2"
- 25 63 mm / 2½"
- 03 80 mm / 3"
- 04 100 mm / 4"

25

2. RANGE

- XXX Refer "Range Table"

XXX

3. MOUNTING PATTERN

- B0 Direct, Bottom connection
- B1 Wall/Surface/Projection mounting, Bottom connection
- R0 Centre, Back connection
- R2 Panel/Front flange mounting, Centre Back connection
- R3 Panel/bracket mounting, Centre Back Connection

B0

4. PROCESS CONNECTION

- 11N 1/8" NPT (M)
- 12N 1/4" NPT (M)
- 14N 1/2" NPT (M)
- 11B 1/8" BSP (M)
- 12B 1/4" BSP (M)
- 13B 3/8" BSP (M)
- 14B 1/2" BSP (M)

12N

5. INGRESS PROTECTION

- ER IP 65
- ES IP 66
- ET IP 67

ER

6. EXECUTION

- EA Dry
- EB Dry but fillable
- EG Dampening liquid filled, glycerine

EB

7. OTHER OPTIONS

- EO Dampening screw, Cu Alloy
- EZ Pointer stop on dial
- GC Shatterproof safety glass
- GM Dampened movement
- XR Custom designed dial
- XT Dial tag marking
- TA 5 - point calibration certificate
- G9 With Freon temperature scales

XX

Ordering Example : P902-25-XXX-B0-12N-ER-EB

NOTES

1. For other connections, please contact factory.

FEATURES

- Economical version
- SS measuring system
- Compact case
- Dry execution

APPLICATION

- Air conditioning
- Refrigeration

Economical



STANDARD PARAMETERS

Accuracy	: CL 1.6
Ambient temperature	: -20...+65°C
Service temperature	: 100°C max.
Pressure limits	: Steady pressure up to 75% of FS value : Short time 1.3 x FS value for range up to 100 bar
Weld joints	: TIG argon arc welding

MATERIAL OF CONSTRUCTION

Sensing element	: Bourdon Tube (<100 bar : C - type)
Case & Ring material	: Steel, powder coated / painted (Push fit type)
Bourdon tube & Shank	: Phosphor Bronze
Movement mechanism	: Copper Alloy
Dial	: Aluminum, black graduation on white background
Pointer	: Fixed, aluminum, black powder coated
Window	: Sheet glass

STANDARD SPECIFICATIONS

Dial size	: DN63 & DN100
Range (With Amonia Scale)	: -1...12.5 bar [B58], -1...16 bar [B47], -1...25 bar[B49] : -30"Hg...150 psi [S45], -30"Hg...300 psi [S48] 0...300 psi [S12]
Mounting pattern	: Direct, Bottom connection
Process connection	: 1/4" NPT (M) 1/4" BSP (M)
Execution	: Dry

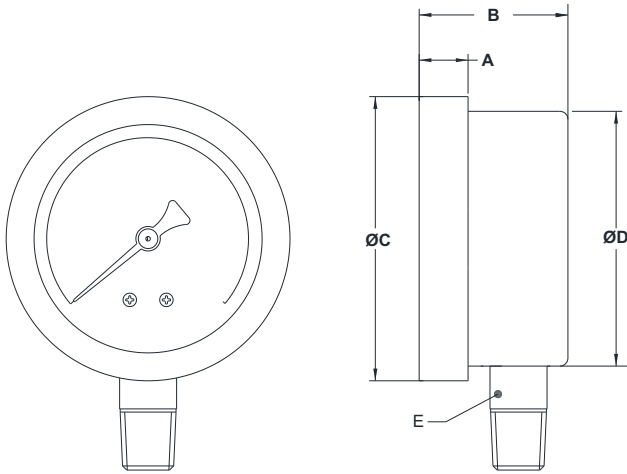
TEMPERATURE EFFECT

When temperature of the measuring system deviates from reference temperature (+20°C) max error $\pm 0.4\%$ / 10K of true scale value.

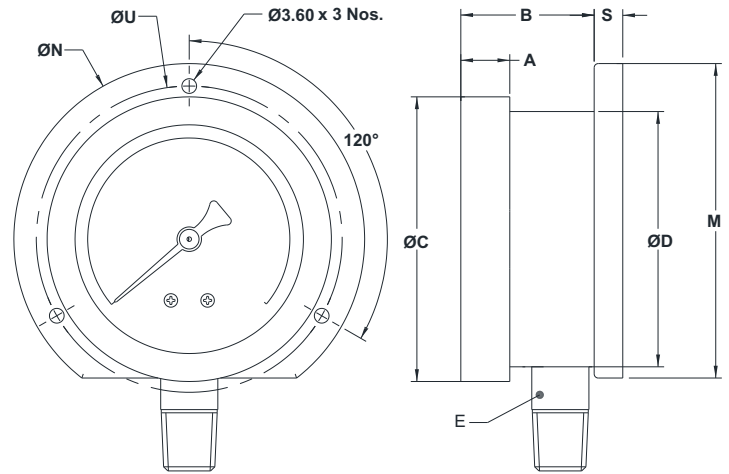
REFERENCE

DIMENSIONAL DRAWING

Type B0



Type B1



DN	A	B	ØC	ØD	E	Weight (grams)
63	12	30	63	62	14	190
100	12.5	35.5	100	98	19	480

DN	A	B	ØC	ØD	E	M	S	ØN	ØU	ØI	Weight (grams)
63	12	30	63	62	14	80	5	88	79	5	235
100	13	36	99	97	17	117	1.2	132	118	6	580

All dimensions are in mm.

ORDERING CODES

1. DIAL SIZE

25	63 mm / 2½"
04	100 mm / 4"

25

2. RANGE

XXX Refer "Range Table"

XXX

3. MOUNTING PATTERN

B0	Direct Bottom connection
B1	Wall/Surface/Projection mounting, Bottom connection

B0

4. PROCESS CONNECTION

12N	¼" NPT (M)
13N	3/8" NPT (M)
12B	¼" BSP (M)
13B	3/8" BSP (M)

12N

5. INGRESS PROTECTION

EV IP 54

EV

6. EXECUTION

EA Dry

EA

7. OTHER OPTIONS

EZ	Pointer stop on dial
XR	Custom designed dial
TA	5 - point calibration certificate
XF	SS tag plate, AISI 304 SS

XX

Ordering Example : P903-25-XXX-B0-12N-EV-EA

NOTES

1. For other connections, please contact factory.

FEATURES

- Economical version
- General purpose
- Compact case
- Dry execution

APPLICATION

- HVAC & FLR Units
- Valve positioners
- Water & Air applications
- Allied process industries

Economical



STANDARD PARAMETERS

Accuracy	:	CL 1.6 (DN63, DN80, DN100, DN150 & DN250)
	:	CL 2.5 (DN25, DN40 & DN50)
Ambient temperature	:	-30...+65°C
Service temperature	:	150°C max.
Pressure limits	:	Steady pressure up to 75% of FS value
	:	Short time 1.3 x FS value for range up to 100 bar
	:	Short time 1.15 x FS value for ranges 100 up to 600 bar
	:	Short time 1.1 x FS value for ranges above 600 bar
Joints	:	Silver alloy brazing / soldering

MATERIAL OF CONSTRUCTION

Sensing element	:	Bourdon Tube (<100 bar : C - type , >100 bar : Helical)
Case & Ring material	:	Steel, powder coated / painted (Push fit type)
Bourdon tube & Shank	:	Phosphor Bronze
Movement mechanism	:	Copper Alloy
Dial	:	Aluminum, black graduation on white background
Pointer	:	Fixed, aluminum, black powder coated
Window	:	Sheet glass

STANDARD SPECIFICATIONS

Dial size	:	DN25 / DN40 / DN50 / DN63 / DN80 / DN100 / DN150 & DN250
Range	:	-1...70 bar (DN40), -1...400 bar (DN50 / DN63 / DN80)
	:	-1...700 bar (≥DN100)
Mounting pattern	:	Direct, Bottom connection
Process connection	:	1/4" NPT (M) / 1/4" BSP (M)
Execution	:	Dry

TEMPERATURE EFFECT

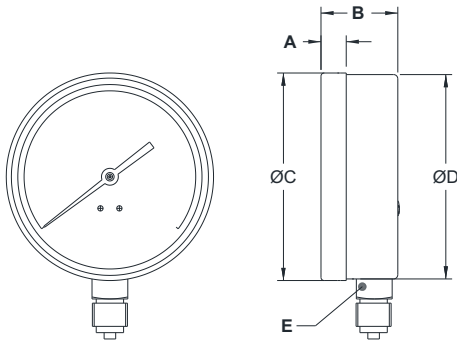
When temperature of the measuring system deviates from reference temperature (+20°C) max error $\pm 0.4\%$ / 10K of true scale value.

REFERENCE

EN 837-1

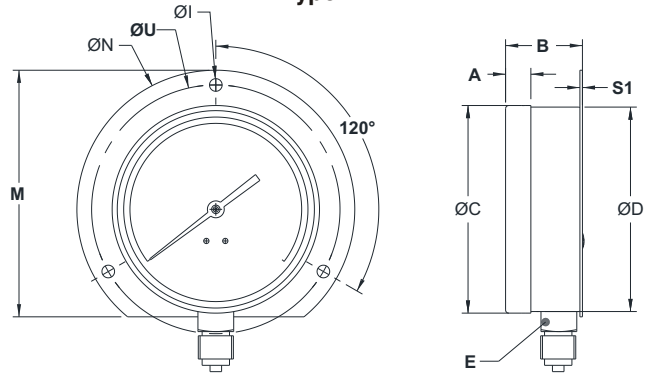
DIMENSIONAL DRAWING

Type B0



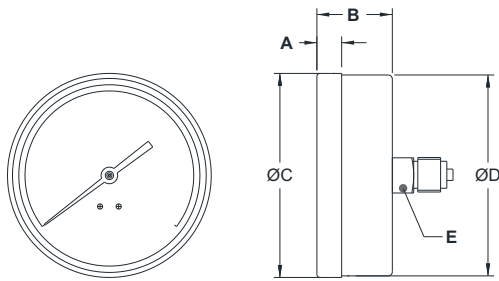
DN	A	B	ØC	ØD	E	Weight (grams)
40	10	26.5	44	42	12	65
50	10	29	53	52	14	90
63	12	29	63	62	14	175
80	12	35	78	76	14	450
100	12	37	98.5	97	17	466
150	16	43	155	154	17	860
250	37.5	51	252	249	22	2060

Type B1



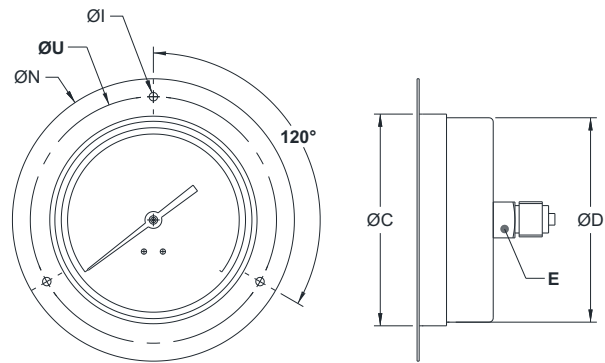
DN	A	B	ØC	ØD	E	ØI	M	ØN	S	ØU	Weight (grams)
63	12	29	63	62	14	5	80	88	5	76	220
80	12	35	78	76	14	5	100	115	5	98	510
100	12	37	98.5	97	17	6	117	132	1.2	118	541
150	16	43	155	154	17	-	181	195.5	7	-	970
250	37.5	51	252	249	22	-	280	288.5	8	-	2210

Type R0



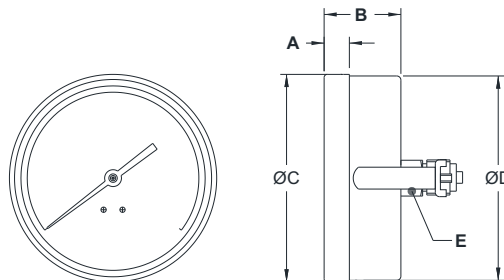
DN	A	B	ØC	ØD	E	Weight (grams)
40	10	26.5	44	42	12	65
50	10	29	53	52	14	90
63	12	29	63	62	14	175
80	12	35	78	76	14	450
100	12	37	98.5	97	17	466
150	16	43	155	154	17	860

Type R2



DN	A	B	ØC	ØD	E	ØI	ØN	ØU	Weight (grams)
50	10	29	53	52	14	4	90	71	130
63	12	29	63	62	14	4	90	76	215
100	12	37	98.5	97	17	4	134	117	540
150	16	43	155	154	17	5	184	170	976

Type R3



DN	A	B	ØC	ØD	E	Weight (grams)
63	12	29	63	62	14	315
80	12	35	78	76	14	500
100	12	37	98.5	97	17	556
150	16	43	155	154	17	1026
250	37.5	51	252	249	22	2270

All dimensions are in mm.

ORDERING CODES

1. DIAL SIZE

01	25 mm / 1"
15	40 mm / 1½"
02	50 mm / 2"
25	63 mm / 2½"
03	80 mm / 3"
04	100 mm / 4"
06	150 mm / 6"
10	250 mm / 10"

25

2. RANGE

XXX Refer "Range Table"

XXX

3. MOUNTING PATTERN

B0	Direct, Bottom connection
B1	Wall/Surface/Projection mounting, Bottom connection
R0	Centre, Back connection
R2	Panel/Front flange mounting, Centre Back connection
R3	Panel/bracket mounting, Centre Back connection

B0

4. PROCESS CONNECTION

11N	1/8" NPT (M)
12N	¼" NPT (M)
14N	½" NPT (M)
11B	1/8" BSP (M)
12B	¼" BSP (M)
13B	3/8" BSP (M)
14B	½" BSP (M)

12N

5. INGRESS PROTECTION

EV IP 54

EV

6. EXECUTION

EA Dry

EA

7. OTHER OPTIONS

EO	Dampening screw, Cu Alloy
EZ	Pointer stop on dial
XR	Custom designed dial
XT	Dial tag marking
TA	5 - point calibration certificate
TO	Certification for Oxygen service
G9	With Freon temperature scales
XF	SS tag plate, AISI 304 SS

XX

Ordering Example : P901-25-XXX-B0-12N-EV-EA

Dial size	Mounting pattern					11N/B	Process connection		
	B0	B1	R0	R2	R3		12N/B	14N/B	13B
01			•			•			
15	•		•			•			
02	•		•			•	•		
25	•	•	•	•	•	•	•		
03	•	•	•	•	•	•	•		
04	•	•	•	•	•	•	•		•
06	•	•	•	•	•	•	•		•
10	•	•						•	•

NOTES

- For other connections, please contact factory.
- Option XT for DN100 and above

© 2014 ITEC All rights reserved. Technical changes and errors are expected. Rev 00