

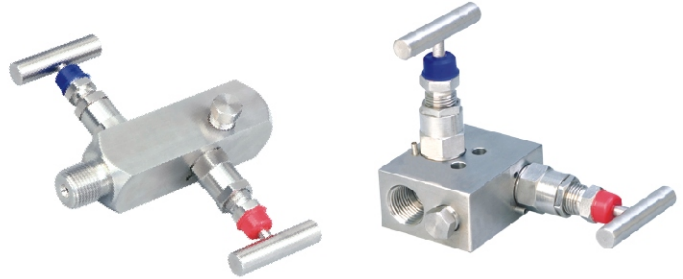
## FEATURES

- 1 isolate & 1 vent valves

## APPLICATION

- Isolation & venting of gauges, switches & transmitters
- High pressure line shut off
- Liquid & gas services

### Direct / Remote Mounting



### STANDARD SPECIFICATIONS

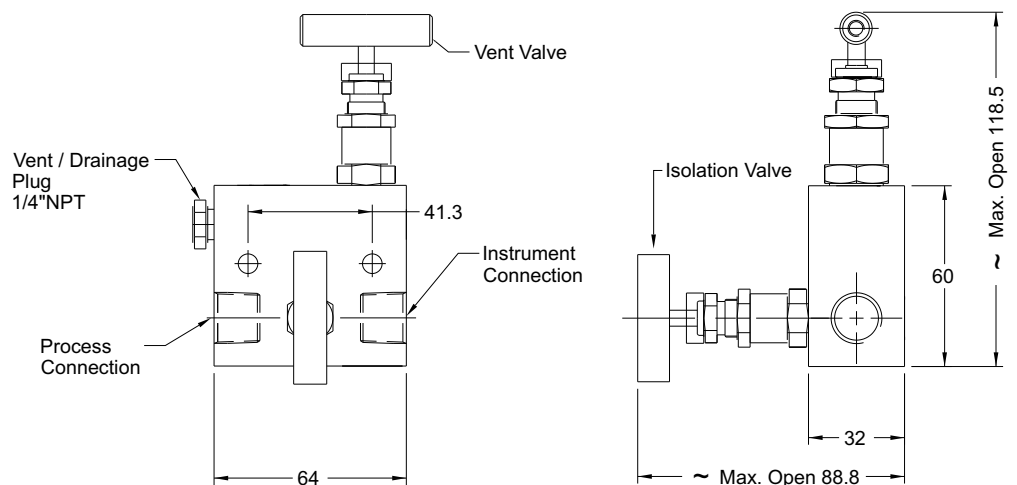
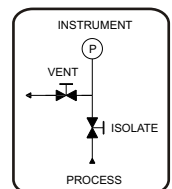
Mounting	: Remote
Pattern	: 2
Wetted parts	: AISI 316 SS
Instrument connection	: 1/2" NPT (F) / 1/2" BSP (F)
Stem packing	: PTFE
Process connection	: 1/2" NPT (M) / 1/2" BSP (M)
Stem	: Conical metal tip
Max. working pressure	: 413.7 bar (6000 psi)
Max. working temperature	: 240°C
"T" bar handle	: AISI 304 SS
Drain port	: 1/4" NPT (F), plugged

### DIMENSIONAL DRAWING

#### Remote mount - Pattern 1



#### FLOW DIAGRAM



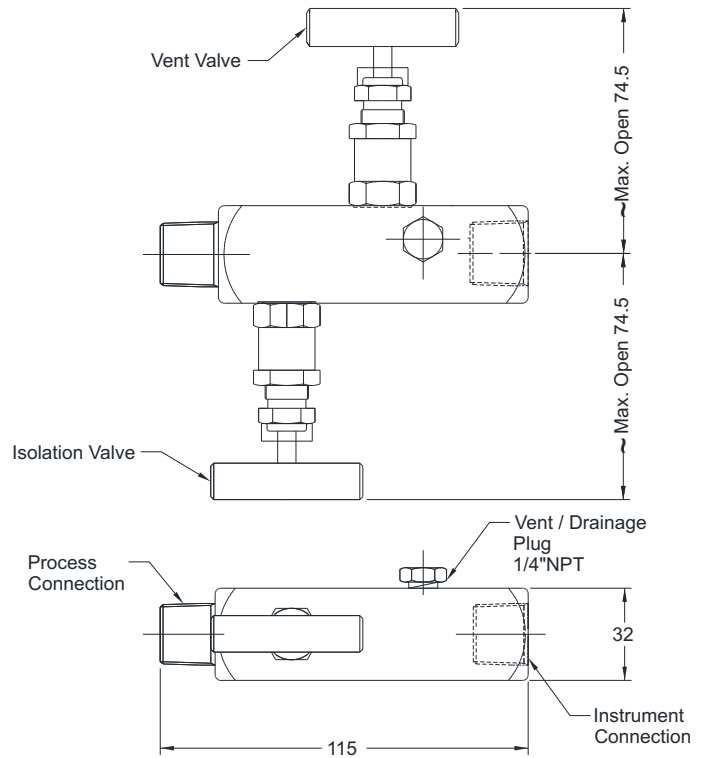
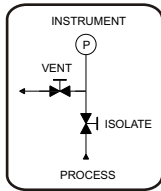
All dimensions are in mm.

DIMENSIONAL DRAWING

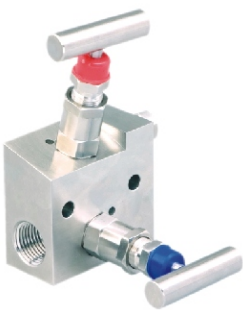
Remote mount - Pattern 2



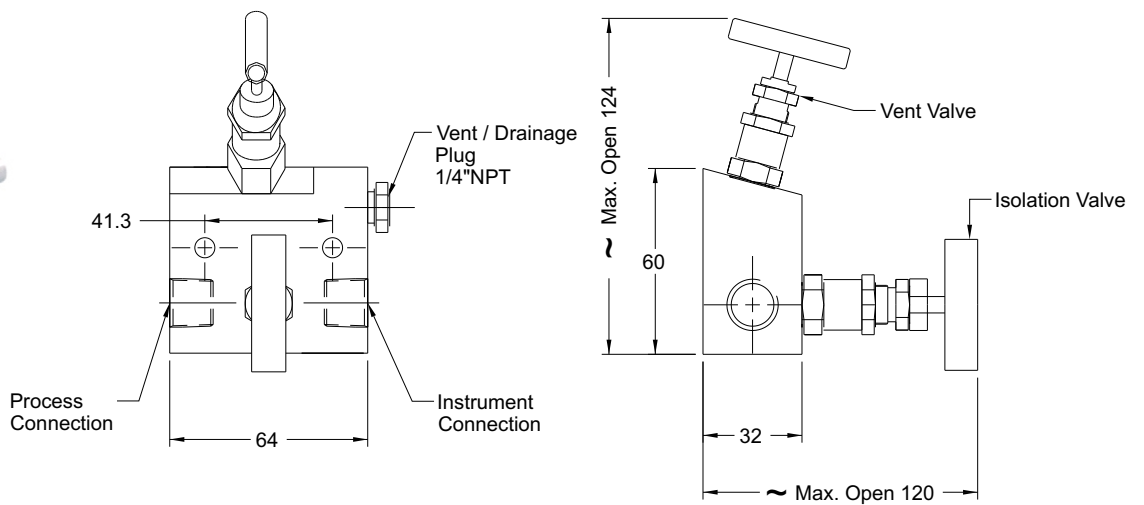
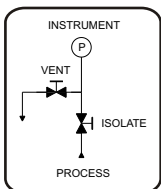
FLOW DIAGRAM



Remote mount - Pattern 3



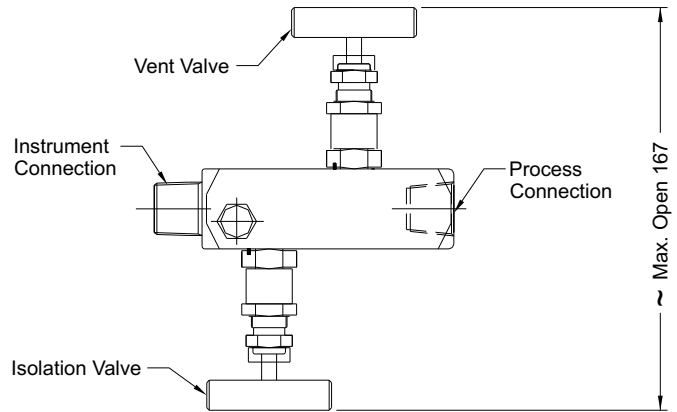
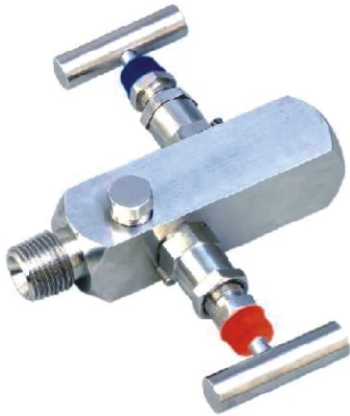
FLOW DIAGRAM



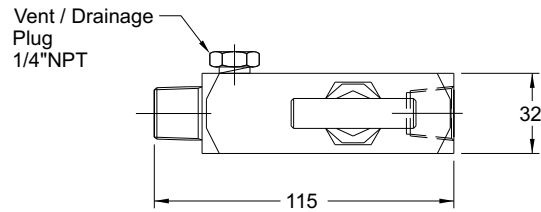
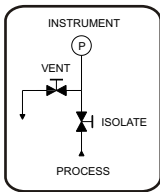
All dimensions are in mm.

DIMENSIONAL DRAWING

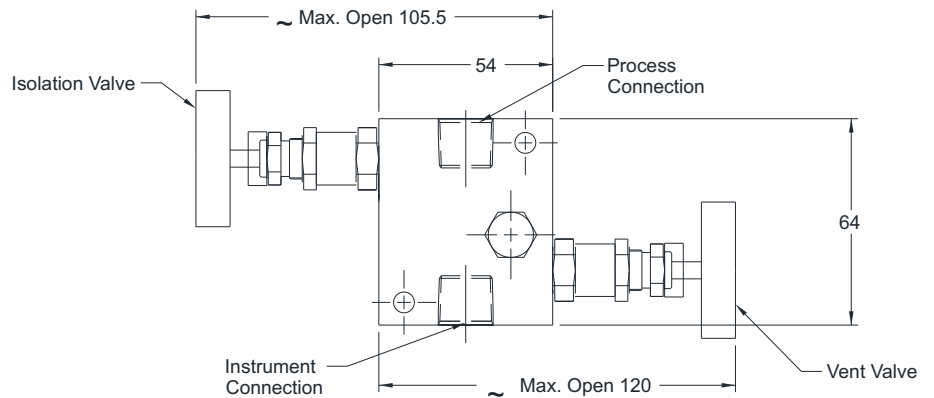
Remote mount - Pattern 4



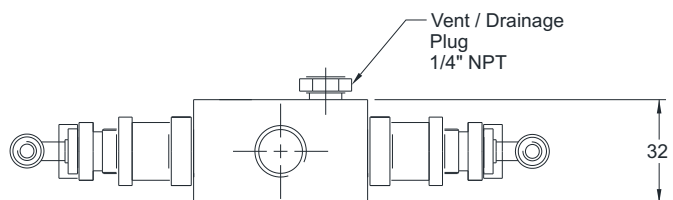
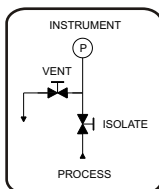
FLOW DIAGRAM



Remote mount - Pattern 5

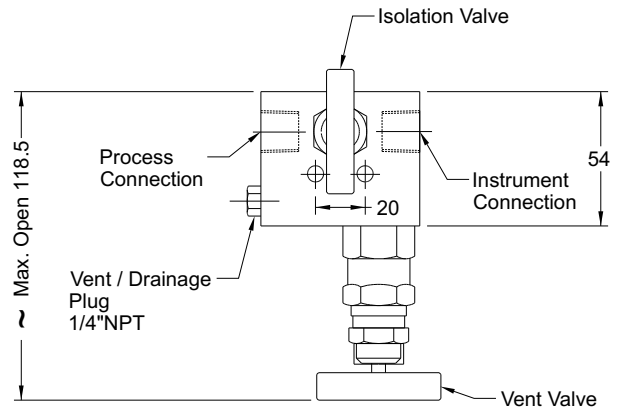
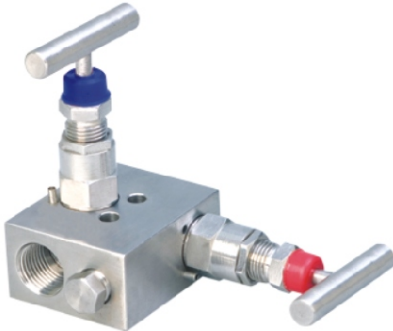


FLOW DIAGRAM

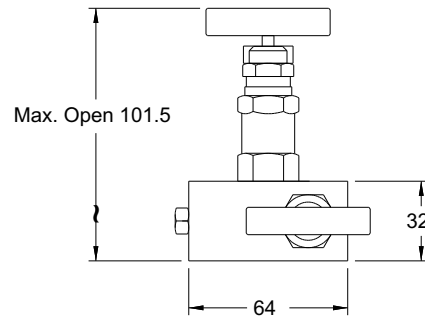
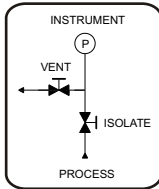


DIMENSIONAL DRAWING

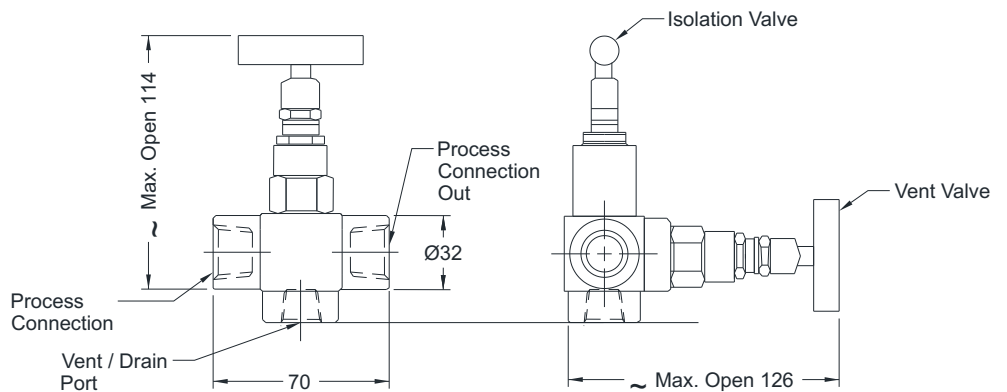
Remote mount - Pattern 6



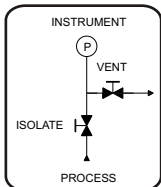
FLOW DIAGRAM



Remote mount - Pattern 7



FLOW DIAGRAM



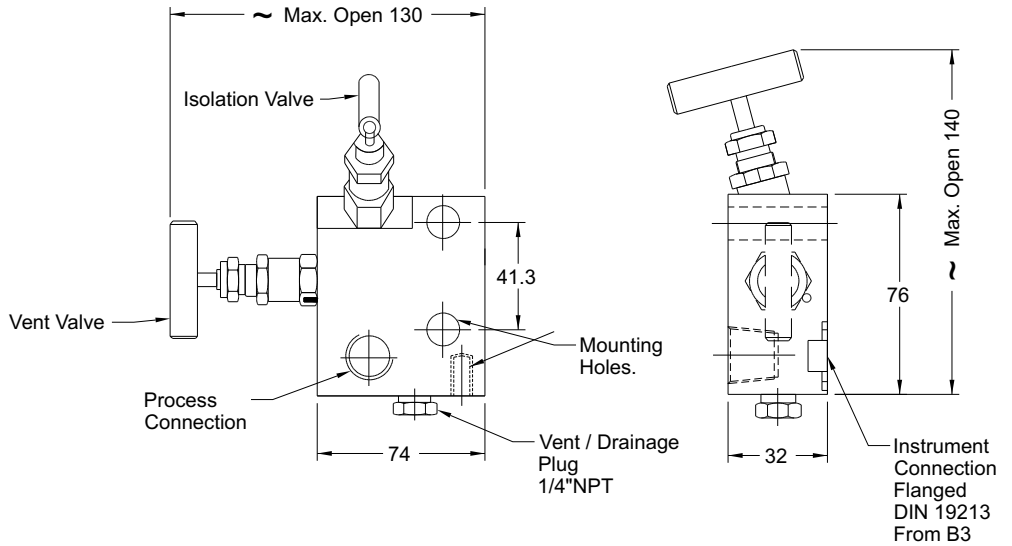
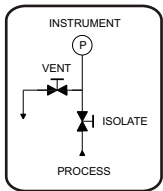
All dimensions are in mm.

DIMENSIONAL DRAWING

Direct mount - Pattern 1



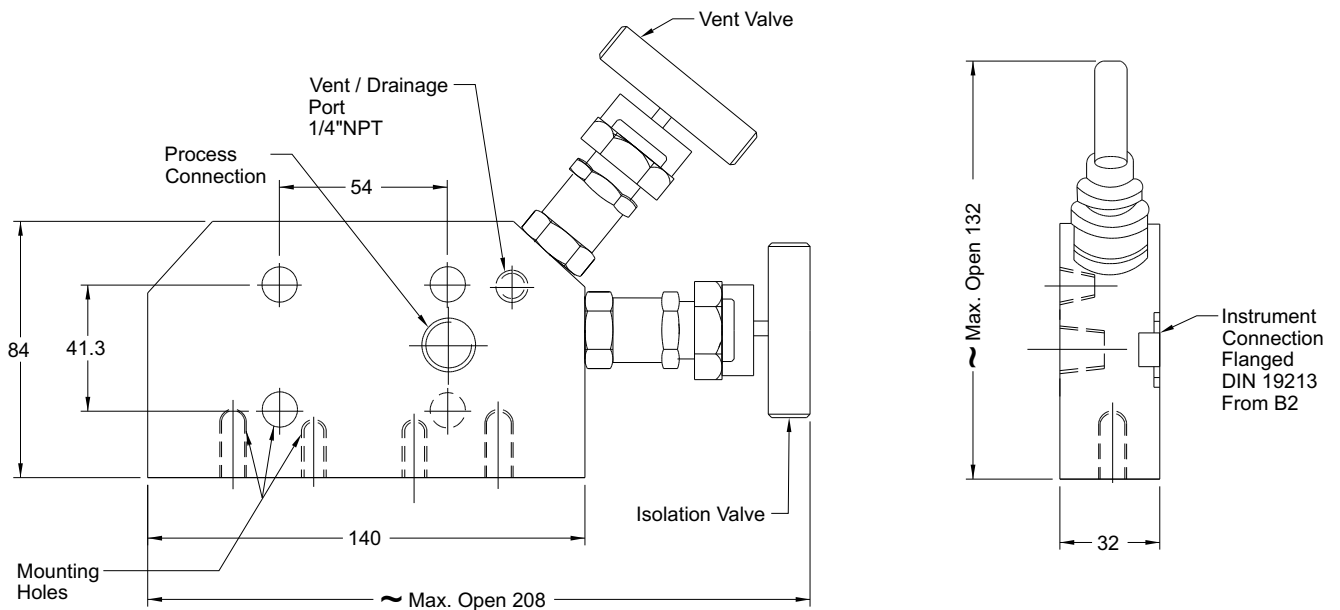
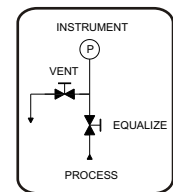
FLOW DIAGRAM



Direct mount - Pattern 2



FLOW DIAGRAM

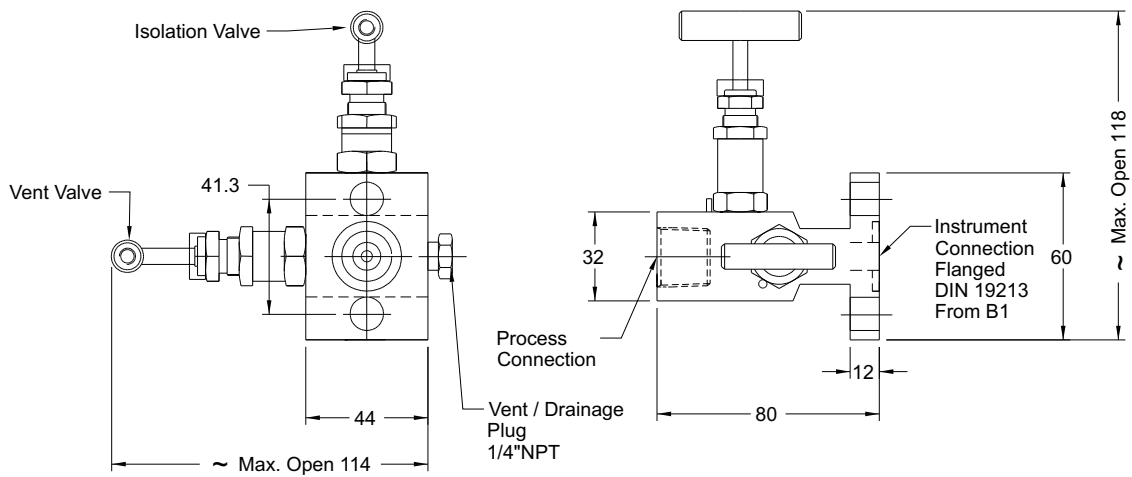
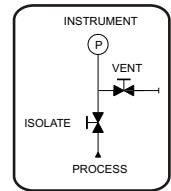


DIMENSIONAL DRAWING

Direct mount - Pattern 3



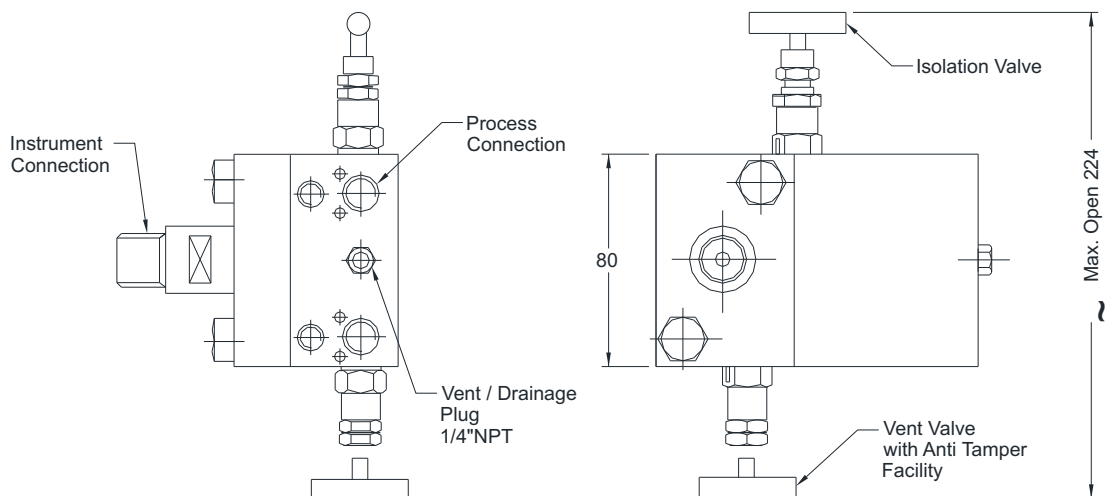
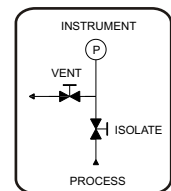
FLOW DIAGRAM



Direct mount - Pattern 4



FLOW DIAGRAM



All dimensions are in mm.

### ORDERING CODES

#### 1. MOUNTING

<b>D</b>	Direct	<b>R</b>	Remote
----------	--------	----------	--------

**R**

#### 2. TYPE

<b>1</b>	Pattern 1	<b>2</b>	Pattern 2
<b>3</b>	Pattern 3	<b>4</b>	Pattern 4
<b>5</b>	Pattern 5	<b>6</b>	Pattern 6
<b>7</b>	Pattern 7		

**2**

#### 3. WETTED PARTS

<b>MB</b>	Carbon Steel / ASTM A105	<b>MF</b>	AISI 316 SS
<b>MC</b>	AISI 304SS	<b>MM</b>	Monel 400
<b>MG</b>	AISI 316L SS	<b>MO</b>	Hastelloy C-276
<b>MN</b>	Monel K-500		

**MF**

#### 4. INSTRUMENT CONNECTION

<b>11N</b>	1/8" NPT (M)	<b>12N</b>	1/4" NPT (M)
<b>13N</b>	3/8" NPT (M)	<b>14N</b>	1/2" NPT (M)
<b>11B</b>	1/8" BSP (M)	<b>12B</b>	1/4" BSP (M)
<b>13B</b>	3/8" BSP (M)	<b>14B</b>	1/2" BSP (M)
<b>01N</b>	1/8" NPT (F)	<b>02N</b>	1/4" NPT (F)
<b>03N</b>	3/8" NPT (F)	<b>04N</b>	1/2" NPT (F)
<b>01B</b>	1/8" BSP (F)	<b>02B</b>	1/4" BSP (F)
<b>03B</b>	3/8" BSP (F)	<b>04B</b>	1/2" BSP (F)
<b>FL5</b>	Flange (DIN 19213 Form B1)		
<b>CL5</b>	Coplanar (DIN 19213 Form B2)		
<b>FL6</b>	Flange (DIN 19213 Form B3)		

**04N**

#### 5. STEM PACKING

<b>P</b>	PTFE	<b>G</b>	Grafoil
----------	------	----------	---------

**P**

#### 6. PROCESS CONNECTION

<b>11N</b>	1/8" NPT (M)	<b>12N</b>	1/4" NPT (M)
<b>13N</b>	3/8" NPT (M)	<b>14N</b>	1/2" NPT (M)
<b>11B</b>	1/8" BSP (M)	<b>12B</b>	1/4" BSP (M)
<b>13B</b>	3/8" BSP (M)	<b>14B</b>	1/2" BSP (M)
<b>01N</b>	1/8" NPT (F)	<b>02N</b>	1/4" NPT (F)
<b>03N</b>	3/8" NPT (F)	<b>04N</b>	1/2" NPT (F)
<b>01B</b>	1/8" BSP (F)	<b>02B</b>	1/4" BSP (F)
<b>03B</b>	3/8" BSP (F)	<b>04B</b>	1/2" BSP (F)
<b>1SW</b>	1/8" Socket-Weld		
<b>2SW</b>	1/4" Socket-Weld		
<b>4SW</b>	1/2" Socket-Weld		
<b>5SW</b>	3/4" Socket-Weld		

**14N**

#### 7. OTHER OPTIONS

<b>XY</b>	Circular Handle
<b>TN</b>	Tested to NACE standards
<b>TO</b>	Certification for Oxygen service
<b>TM</b>	Material test certificate 2.2
<b>TH</b>	Hydro test certificate
<b>TC</b>	Material test certificate 3.1
<b>XR</b>	Customized Marking
<b>XL</b>	Marking by laser

**XL**

**Ordering Example : M102-R-2-MF-04N-P-14N-XL**

### APPLICABLE ACCESSORIES

<b>A501</b>	Mounting Bracket, two valve manifold	<b>A506</b>	Mounting bolts
<b>A507</b>	Ring for flanged seal	<b>A508</b>	Sealing gasket

#### NOTES:

1. Other connections are available, please contact factory for details.
2. Valve stem dust covers shall be identified with color codes according to their function as Blue = ISOLATE, Green = EQUALIZE & Red = DRAIN / VENT.
3. For option "F5 = Flange (DIN 19213 Form B1)", the CC distance shall be 54 mm.