



# ADT901

## Low Pressure Test Pump User's Manual

[Version number:1409V12]

Please download the latest version from [www.additel.com](http://www.additel.com)



### Warnings and cautions

- > Do not exceed the safety pressure limit of 60 psi (4 bar).
- > This test pump is not designed to be used in explosive or corrosive environments.
- > Over tightening connectors may cause damage.
- > Store the pump in a dry and non-corrosive environments.
- > Additel is not liable for any safety problems or damages caused by misuse or incorrect operation.

### Specification

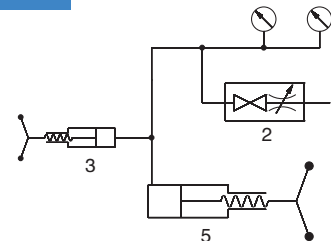
- > **Pressure range:** 6 psi ( 0.4 bar ) vacuum to 6 psi ( 0.4 bar ) pressure
- > **Temperature:** 0 ~ 50°C
- > **Humidity:** < 95%RH
- > **Resolution:** 0.1Pa ( 0.001 mbar )
- > **Safety pressure:** < 60 psi (4 bar)
- > **Pressure media:** Air
- > **Size:** Height: 5.71" ( 145 mm )  
Base: 9.65" ( 245 mm ) x 6.50" ( 165 mm )
- > **Weight:** 3.5 lb ( 1.6 kg )

### Configuration & Air routine



- 1-Quick connector**
- 2-Vent or shut off valve**  
(Clockwise to close, counterclockwise to open)
- 3-Fine adjust handle**  
(clockwise to increase pressure)
- 4-Quick connector**
- 5-Main adjustment handle**  
(clockwise to increase pressure)

### Air routine

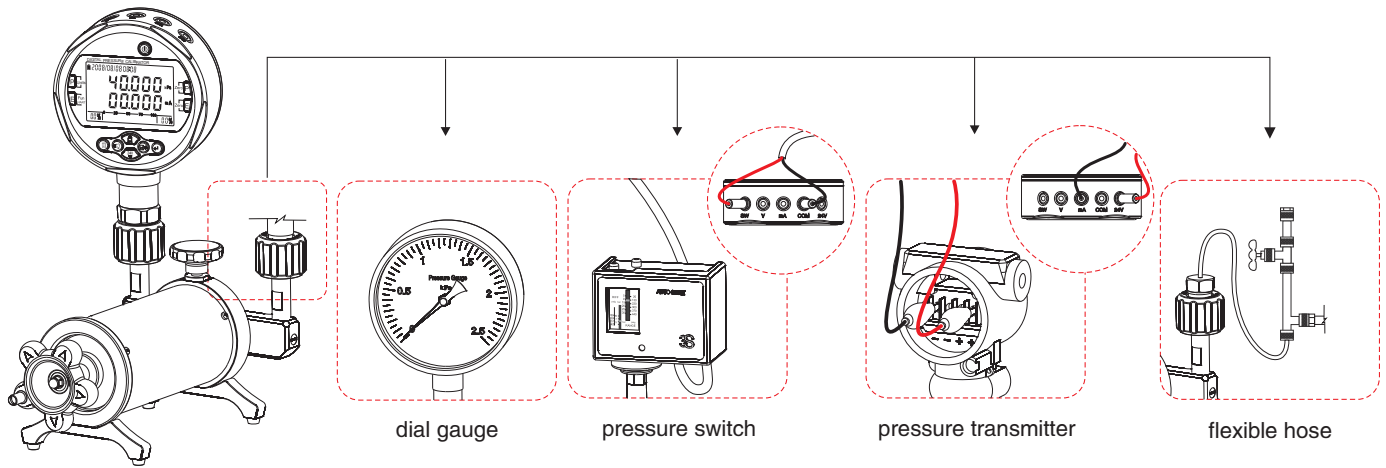


### Troubleshooting

Problem	Cause	Solution
Pressure will not increase or decrease with the main adjustment handle.	A. The vent valve is open.	Close the vent valve.
	B. The O-ring seal is loose or damaged.	Replace the O-ring seal.
Pressure will not increase or decrease with the fine adjust handle.	A. The gauges are not tightened.	Tighten the reference gauge or the gauge under test.
	B. The seal is damaged.	Replace the seal.
	C. The thread surface is not smooth.	Use Teflon tape on the thread and turn it in tight.
	D. The connector type is mismatched to the gauge pressure port.	Use the correct adapter.
It is difficult to turn the quick connector.	A. Too much force was previously applied.	Secure the quick connect with less force.
	B. The threads have no lubrication.	Apply lubrication to the threads.

### O-Rings for pressure connector

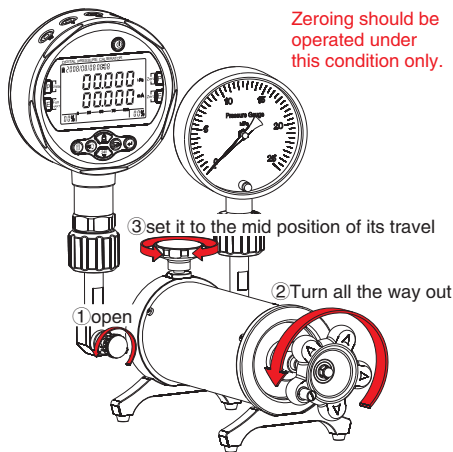
P/N	Size	Connector
1611300004	4X1.5	M10X1, 1/8BSP, 1/8NPT
1611300220	6.5X3	M20X1.5, 1/2BSP, 1/2NPT
1611300024	6X2	M14X1.5, 1/4BSP, 1/4NPT, 3/8BSP



**Vent and positive pressure preparation**

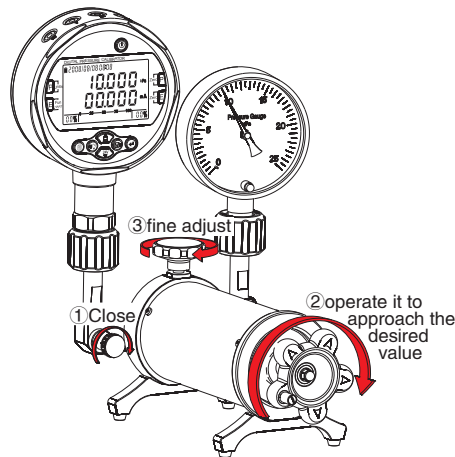
B

Zeroing should be operated under this condition only.



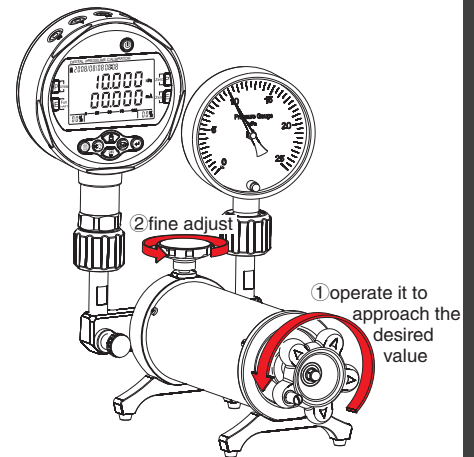
**Increasing pressure**

C



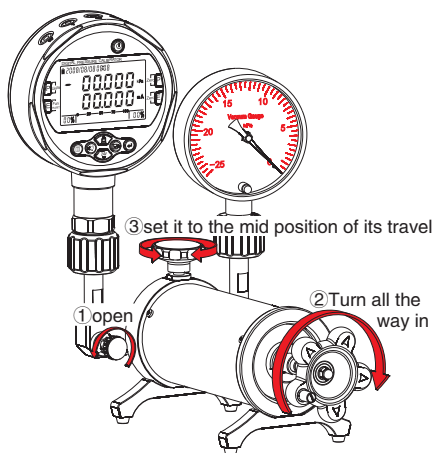
**Decreasing pressure**

D



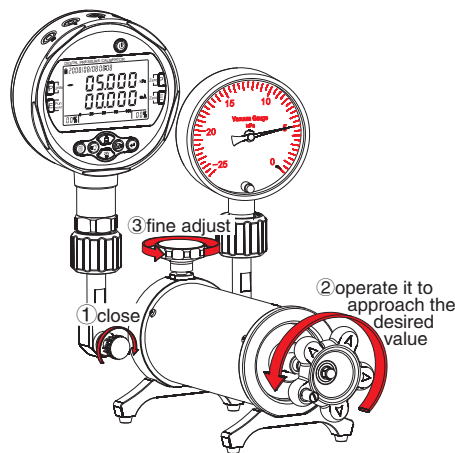
**Vacuum preparation**

E



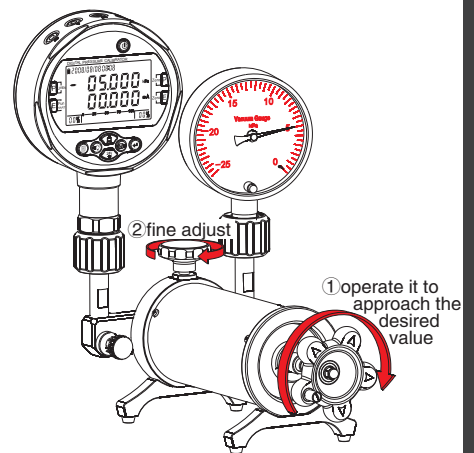
**Increasing vacuum pressure**

F



**Decreasing vacuum pressure**

G



**Remark:** A: Additel has made a concerted effort to provide complete and current information for the proper use of the equipment. The product specifications and other information contained this manual are subject to change without notice.

B: Above pictures are just for reference.